



TE KUNENGA | MASSEY  
KI PŪREHUROA | UNIVERSITY  
UNIVERSITY OF NEW ZEALAND

# International Qualification Guide 2024





# Haere mai Welcome

In a time where change seems more constant than ever and where choice has never been more important, picking a university can seem like a daunting task. This Guide aims to answer your questions about why Massey might be right for you, and how we will help support you on your study journey.

The COVID-19 pandemic has presented a lot of challenges, but Massey's flexibility and long history of delivering online learning meant that we, along with students both in Aotearoa New Zealand and around the world, could weather the storm together, with as little disruption as possible.

Massey has a long, proud tradition of teaching and research excellence. Its heritage, geographic spread over three major cities, range of qualifications and the flexibility of its distance teaching all mean it offers students from around the world the ability to tailor their study to meet their needs and at the same time connect closely with industry, professional organisations and local communities.

Typically, we have more than 5000 international students each year from 100 countries. Massey also delivers teaching qualifications in seven other countries and has international teaching partnerships with tertiary institutions in 15 nations.

We recognise that choosing to leave your own country in order to achieve academic qualifications is a life-changing decision. I warmly invite you to be part of our diverse and stimulating student community.

Whatever you choose to study, and wherever you chose to do it, we understand success comes from a thousand little moments and here at Massey we are committed to helping you every step of the way.

**Professor Jan Thomas**  
Vice-Chancellor, Massey University

- 3 Campus guide
- 4 Commercial leadership
- 6 Design, fine arts, music and screen arts
- 8 Global health and wellbeing
- 10 Global critical thinking
- 12 Science, technology and agriculture
- 14 Accommodation and living costs
- 15 Foundation and English language pathways
- 15 Student exchange
- 16 International student support and services
- 18 Qualifications available to international students in New Zealand
- 28 Study online from your country
- 29 Online qualifications available to international students
- 37 Entry requirements for international students
- 39 Academic entry requirements by country/region
- 41 Contact Massey for more information

2024 Issue (Updated August 2023)

The information contained in this publication is indicative of the fees and offerings correct as of August 2023. This information is subject to change. While all reasonable efforts have been made to ensure listed qualifications are offered and regulations and fees are up to date, the University reserves the right to change the content or method of presentation, or to withdraw any qualification or part thereof, annually increase fees or impose limitations on enrolments. For the most up to date information please go to [massey.ac.nz/international](https://massey.ac.nz/international)





# Aotearoa New Zealand

**WHETHER ON CAMPUS OR ONLINE, EXPLORE  
NEW ZEALAND AND MASSEY.**

Photo: Redwoods Treewalk, Rotorua



# Campus guide



**MASSEY HAS THREE CITY CAMPUSES: AUCKLAND, WELLINGTON, AND MANAWATŪ CAMPUS IN PALMERSTON NORTH. YOU CAN ALSO STUDY WITH US BY DISTANCE.**



## AUCKLAND

[massey.ac.nz/auckland](https://massey.ac.nz/auckland)

- A beautiful campus with state-of-the-art teaching and learning facilities
- Based in a diverse, multi-cultural city of 1.5 million people
- A culture that fosters innovation through strong connections with industry, including an on-site business incubator
- High quality academic qualifications taught by world-class researchers and teachers, including four Distinguished Professors in sciences and humanities and social sciences.

## PALMERSTON NORTH

[massey.ac.nz/manawatu](https://massey.ac.nz/manawatu)

- An international campus with staff and students from over 80 countries
- World-class academic qualifications, teachers and researchers
- Great sporting facilities, a state-of-the-art food plant and farms
- Affordable accommodation and living
- A safe, friendly, young person's city – a third of its population are aged 15 to 30 years.

## WELLINGTON

[massey.ac.nz/wellington](https://massey.ac.nz/wellington)

- A friendly, vibrant and creative place
- Home to the Ngā Pae Māhutonga Wellington School of Design
- World-class research centres for public health, sleep, Māori health, disaster research, and tertiary teaching excellence
- Wellington regularly ranks as one of the most liveable cities in the world (Deutsche Bank Quality of Life Survey)
- Compact and set between a magnificent harbour and green hills.



# Commercial leadership



## TE KURA WHAI PAKIHI MASSEY BUSINESS SCHOOL

Massey Business School (MBS) prides itself on accessible teaching, research, and engagement, connected to practice. An MBS qualification provides a strong career foundation, ensuring you have the skills to succeed no matter where your future takes you.

MBS partners closely with many leading New Zealand companies and has a range of internships with actual businesses built into our qualifications. Today's students require skills that take them to the top of the business worldwide. MBS takes you there with our focus on globally relevant and future-focused learning.

Massey Business School is ranked highly and an MBS qualification will open doors for you. Our connection to practice informs MBS programmes, providing the quality of education businesses require. MBS is proactive and thinks outside the box for the what the students need, for example from 2024 a newly developed Bachelor of Business CFA Pathway will provide a 6-week intensive CFA L1 linked to the finance industry's gold standard qualification.



Based on employer feedback, we offer programmes in high demand:

- Accounting
- Aviation
- Economics
- Finance and Banking
- Human Resources
- Management and Leadership
- Property
- Technology Management

We also have a wide range of research centres across faculty disciplines that link into our practical learning:

- NZ FIN-ED Centre
- Centre for Advanced Retail Studies (CARS)
- Centre for Culture-Centred Approach to Research and Evaluation (CARE)
- Healthy Work Group
- Knowledge Exchange Hub
- MPOWER (Massey People, Organisation, Work and Employment Research)
- New Zealand Centre for Macroeconomics
- Real Estate Analysis Unit (REAU)
- Te Au Rangahau

MBS research centres develop and showcase collective expertise and opportunities for students and industry, and epitomise MBS's commitment to stakeholder engagement and impactful outcomes. Many are unique nationally, with wide international connections and influence. Click [here](#) for more detail or see [www.massey.ac.nz/business](http://www.massey.ac.nz/business)

## SUCCESSFUL GRADUATES

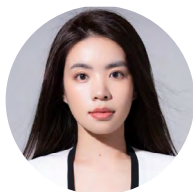


**DR VINOLIA SALESI**  
**TONGA**  
PhD Aviation

Graduating as a PhD in 2022 without emendations and despite the challenges of the pandemic, Dr Salesi's doctoral thesis "Identifying challenges of aviation growth within the South Pacific Region" was chosen to recognise the fact that aviation is one of the keystones for economic development in the South Pacific Region (SPR). It enabled her to identify gaps in aviation policies in the region that may contribute to the limited growth within the SPR aviation industry. Her study will contribute to the aviation and tourism literature (with particular reference to the SPR region) and to ICAO's 'No Country Left Behind' initiative, which aims to ensure that "all States have access to the significant socio-economic benefits of safe and reliable air transport."

[www.icao.int/about-icao/nclb](http://www.icao.int/about-icao/nclb)

Vinolia says her skillset as an academic researcher has been considerably enhanced because of her doctoral journey. Another high point was seeing her articles published in journals such as Asia Pacific Journal of Tourism Research and Journal of Air Transport Management.



**JIA MIAO**  
Shanxi Securities - Fund manager  
Master of Finance

During my study in Massey, I had opportunities to learn from the excellent professors and the students from different countries, to develop the ability to solve problems, to build my own research system. All these are extremely useful in my daily work.

Jia was selected as "Best fixed-income portfolio manager (three-year performance) in China" by China Fund News.



**JUN WEN**  
Master of Professional Accountancy & Finance  
Auditor at Audit New Zealand

Massey was one of the few universities that provided me the opportunity to re-launch my life. I started to tutor finance and property courses from early 2018 and tutored almost all undergraduate finance papers that we offered at Massey during those 5 years, allowing me to enhance my people and presentation skills. In 2019, I started my Master of Professional Accountancy and Finance degree - one of the best decisions that I have made in my life. An accounting degree provided me an additional option when choosing my career, which commences in March this year as a graduate Auditor at Audit New Zealand, promoting the wellbeing of all New Zealanders through public sector auditing.

### CONTACT US

[business@massey.ac.nz](mailto:business@massey.ac.nz)

### VISIT

[massey.ac.nz/business](http://massey.ac.nz/business)

### WORLD RANKINGS

Massey is ranked in the top 100 for Communication and Media, the top 250 for Accounting Finance, 350 for Economics Econometrics, and 350 for Business Management studies according to the QS (Quacquarelli Symonds) rankings.



### PRESTIGIOUS ACCREDITATION

Massey Business School holds a top 300 Shanghai Ranking globally for Business Administration and Economics, as well as the prestigious AACSB accreditation.







# Design, fine arts, music, and screen arts



## TOI RAUWHĀRANGI COLLEGE OF CREATIVE ARTS

Toi Rauwhāringi is New Zealand's premier provider of creative arts education, with comprehensive, internationally benchmarked, future-focused qualifications, innovative studio-based learning, high levels of undergraduate and postgraduate student achievement and a distinctive contribution to Māori and Pacific creative arts practice.

Our wide range of opportunities are actively engaged across a broad range of creative industries, including:

- Commercial music
- Design
- Fine arts
- Māori visual arts
- Screen arts



## RESEARCH EXCELLENCE

### WORLD-CLASS STANDING

Massey's reputation has grown through the quality of its faculty and the achievements of its students. Massey is New Zealand's top ranked Art and Design School (QS World University Rankings), and at the International Red Dot awards, has ranked in the top 3 design schools in Asia-Pacific for eight years in a row. We also hold substantial equivalency with NASAD.

### GLOBALLY CONNECTED RESEARCH

Massey also has more top-ranked, globally connected researchers in design and visual arts and crafts than any other art school in New Zealand (Performance-Based Research Funding Round (2019). Our exceptional practitioners use industry standard facilities to offer a stimulating, innovative learning environment.

### WE CONNECT CREATIVITY TO ECONOMIC GROWTH

Our course range is industry-connected, offering cross-disciplinary learning on real-world briefs to nurture creative, critical thinking. We encourage entrepreneurial thinking and problem solving skills to prepare students for the rapidly changing global economy. Our vibrant, positive environment offers a transformative experience for a growing number of researchers at all career stages.

## ACADEMIC EXCELLENCE



**ANGELA KILFORD**  
**TE WHANAU A KAI, NGĀTI POROU,**  
**NGĀTI KAHUNGUNU**

Senior tutor/lecturer, Ngā Pae Māhutonga,  
Wellington School of Design

A designer and artist with a background in textiles, Angela's inspiration comes from Māori concepts and knowledge. Recent works explore the whakapapa (genealogy) of local ecology and lesser known connections between living and non-living entities. These ideas are examined and expressed through walking, performance, collaborative making, large scale public installations and writing. Angela teaches across textiles, materials and critical and contextual studies for art and design.

## SUCCESSFUL GRADUATE



**SISSI (KIM NGÂN) NGUYỄN**  
**VIETNAM**

Bachelor of Creative Media Production\*, 2020

Originally from Ho Chi Minh City, Vietnam, Sissi came to New Zealand in 2016 to study high school at Aotea College in Porirua, Wellington. During her time at Aotea, she discovered digital art and motion design. In 2018, she came to Massey University to pursue her passion, and studied the Bachelor of Creative Media Production. With her achievements and results during high school, Sissi was also awarded the Massey University Creative Arts International Excellence scholarship.

During her time at Massey, Sissi has been exposed to a range of media production skills, from animation and visual effects to game design and interactive media. Besides the practical skills, Massey also provided her with good supporting systems and great friendships along the way. One of the things she likes the most about the qualification is the freedom to focus on the skills and the role she wants for her career pathway. For her undergraduate thesis, she worked as the art director for Neocense, a 2D isometric puzzle game, with a group of eight other students. Her team then successfully launched the game on Steam – a digital game distribution platform. The game has received positive feedback from the community and was also a finalist for Excellence in Representation and Excellence in Accessibility categories for the New Zealand Game Awards 2021. Sissi is now employed as a Junior Motion Designer at Fox and Co. Design in Wellington.

\*Now Bachelor of Screen Arts with Honours

### CONTACT US

[creative@massey.ac.nz](mailto:creative@massey.ac.nz)

### VISIT

[creative.massey.ac.nz](http://creative.massey.ac.nz)

### TOP 150 WORLD RANKING

Massey was ranked in the top 150 in the world for Art and Design according to the QS (Quacquarelli Symonds) rankings in 2023.



### MAKE GREAT WORK

Our students win awards at national and international competitions.



reddot







# Global health and wellbeing



## TE KURA HAUORA TANGATA COLLEGE OF HEALTH

A changing world with new problems demands new thinking and new leadership. Massey's College of Health takes a fresh approach to optimal health and wellbeing, and promotes equity and social justice. We make a difference by considering and embracing diversity, social determinants and environmental interactions across a wide range of health-related areas.

Our specialists focus on applied social research, health system strengthening, workforce development, environmental health, public health policy, sleep, sport and exercise, and nutrition. We also champion health and wellbeing, promoting healthy lives, advising on policy that supports these activities, and finding ways to keep people and communities well.

## RESEARCH EXCELLENCE

Massey College of Health empowers academics and researchers to solve the global health challenges of the 21st century together. Whether you're a student or research collaborator, you will work alongside the most innovative thinkers and experts in New Zealand, and benefit from the expertise of our world-leading health researchers.



# RESEARCH CENTRES

## RESEARCH CENTRE FOR HAUORA AND HEALTH

Focuses on understanding and influencing the wellbeing of all New Zealanders, and contributing to a skilled and responsive health research workforce.

Disciplines, topics and methods include: epidemiology, mātauranga Māori, occupational and environmental health, health surveillance, non-communicable diseases, Māori health, Pacific health, indoor health and air quality, nutrition, biodiversity, sport performance, housing and injury.

## SHORE AND WHĀRIKI RESEARCH CENTRE

Undertakes policy and collaborative community research on, and evaluations of, a variety of health and social topics, such as kaitiakitanga, privilege, racism, illicit drugs, housing, transport and urban development, health services, unhealthy commodities, particularly alcohol, and digital marketing. The centre consists of two multidisciplinary research groups working in a Treaty of Waitangi partnership model to produce excellent research with the aim of improving health and wellbeing and reducing inequities in Aotearoa, New Zealand and globally.

## SLEEP/WAKE RESEARCH CENTRE

Advances scientific knowledge about circadian rhythms, sleep and waking function. The centre works with government agencies, industries and community groups to improve the health, safety and wellbeing of people, and has extensive experience in evidence-based consulting in the areas of shift work and fatigue management, including independent accident investigation and expert testimony.

# SUCCESSFUL GRADUATES



**SHASHA WU**  
**CHINA**

Bachelor of Science  
(Human Nutrition, Exercise and Sport Science)

"It is a very practical course with interesting topics. I found the academic support and the resources like the library really helpful, and I love all the lab activities that are provided at Massey. I enjoyed the great environment at the Albany Campus in Auckland."



**AKISI RAVONO**  
**FIJI**

Doctor of Philosophy in Nursing

"My PhD research is on diabetes. More than 430 million people around the world have diabetes, and in Fiji it affects one-third of the adult population. It is my goal to improve nursing care for diabetic patients and encourage a shift towards a more preventative approach to reducing life-threatening situations and associated conditions. I am very proud to be studying at Massey. I am encouraged in a way that suits my ability, and I have great supervisory support."



**HAIRUNNISA SHAFI**  
**INDIA**

Doctor of Philosophy in Social Work

"As a social worker and researcher, I believe obtaining a PhD in Social Work at Massey University helps me explore who I am as a person and how I can develop myself, both professionally and personally. Studying at Massey has provided a good opportunity to build and maintain friendships with people from all over the world, enjoying world class educational facilities that help me improve my verbal as well as written communication skills. I now have the confidence to develop innovative research projects, work independently, critically analyse topics and deliver effective presentations."

### CONTACT US

[health@massey.ac.nz](mailto:health@massey.ac.nz)

### VISIT

[massey.ac.nz/health](https://massey.ac.nz/health)

## WORLD RANKINGS

- Nursing - top 150
- Biological Sciences - top 450  
(2023 QS World University Rankings by Subject)
- Nursing - top 150, 2nd in New Zealand
- Public Health - top 300 and 4th in New Zealand  
(2022 Shanghai Global Rankings of Academic Subjects)
- School of Sport, Exercise and Nutrition - top 200  
(2021 Shanghai Global Ranking of Sport Science Schools and Departments)

## ACCREDITATION

- Institution of Occupational Safety and Health
- Medical Sciences Council of New Zealand
- New Zealand Dietitians Board
- Register of Exercise Professionals
- Social Workers Registration Board
- Our Environmental Health qualifications are recognised by the Ministry of Health New Zealand and Environmental Health Australia







# Global critical thinking



## TE KURA PŪKENGĀ TANGATA COLLEGE OF HUMANITIES AND SOCIAL SCIENCES

Studying the humanities and social sciences will inspire your intellectual passion, ignite your imagination, enable you to think critically and help you to apply what you learn in the real world. We will challenge your thinking and enable you to be more creative, more innovative and more adaptable. We will teach you valuable skills that allow you to connect with your work, your community and your world.

## RESEARCH EXCELLENCE

As our digital, connected lives grow, so does our population – and that threat to our environment is the most pressing, existential issue of our time. We would argue that the approaches we must adopt to living in this century challenge us to be adaptive, responsive and engaged citizens. Massey researchers seek to resolve the impact of this emergent new social model, and provide meaningful contributions to inform debate, and offer people-focused research to support developments that will enrich our future lives.



# RESEARCH

## PEDAGOGY

Research and development of the strategies teachers use to manage and teach languages in multi-level classes.

## MENTAL HEALTH

Mental illness, including depression, is part of the wave of chronic illnesses affecting today's population. Massey researchers successfully adapted a cognitive behavioural therapy qualification for adult Māori suffering from depression.

## THE IMMIGRANT EXPERIENCE

Massey has explored immigrant economic success and work experience while also reviewing the contributions immigrants have made to community, culture and social development.

# ACADEMIC EXCELLENCE



**DR. APISALOME MOVONO**  
Senior Lecturer in Development Studies,  
School of People Environment and Planning

Dr. Apisalome Movono is Senior Lecturer in Development Studies, with a Marine Affairs and Tourism Studies background in the Pacific and Australia. His research includes resilience, sustainable livelihoods, and the complex and adaptive nature of the Pacific Island's social and ecological landscape. He is a recipient of a Marsden Fast-Start Grant and was appointed as a Lead Expert in the inaugural Tourism Panel on Climate Change launched at COP27 in 2022. He is an indigenous Fijian from Buca village, Vanua of Sovatabua, in the province of Cakaudrove and has been involved in various capacities in the development of Pacific peoples.

In 2021 he was appointed by the South Pacific Tourism Organization as Chair and convener of the Pacific Tourism Research Symposium. Api is also the cofounder of the Laucala Beach Sustainability Society, a small community based non-for-profit society that works for the protection of the Laucala Beach Heritage Site.

# SUCCESSFUL GRADUATE



**SHAWN VARGHESE**  
INDIA  
Master of Education, 2020

"I decided to turn my passion of becoming a teacher into reality and study a Master of Education in New Zealand at Massey University.

After spending time as a lecturer of English language and literature it was important for me to expand my knowledge of the learning and teaching system.

After arriving in New Zealand, I realized that I got more than I bargained for. Be it the course structure, resources or the brilliant and supportive academics, everything is harmonized and tailored for perfect learning conditions.

Studying at Massey has given me multiple perspectives, unlimited options to explore and transformed my thinking about the learning and teaching process in education.

The Master of Education program demands critical thinking and open-minded analysis of different subject areas from multiple perspectives. You also need a growth mind-set. Students should be eager and willing to bring their own thoughts, experiences, visions, and ideas to their study. Massey challenges your concepts with new perceptions."

## CONTACT US

[humsocsci@massey.ac.nz](mailto:humsocsci@massey.ac.nz)

## VISIT

[massey.ac.nz/cohss](https://massey.ac.nz/cohss)

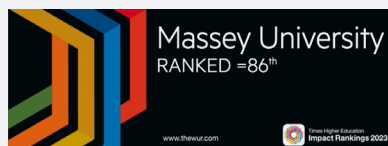
## WORLD RANKINGS

Massey ranks in top 50 for Development Studies, top 100 for Communication and Media, top 250 for Education, top 300 for Psychology and Sociology according to the QS (Quacquarelli Symonds) rankings.



## SUSTAINABLE DEVELOPMENT GOALS

Massey is ranked second overall among New Zealand universities in the latest Times Higher Education Impact Rankings.







# Science, technology, and agriculture



## TE WĀHANGA PŪTAIAO COLLEGE OF SCIENCES

The College of Sciences contributes to the needs of New Zealand and builds capability for the country through research and the development of high-quality graduates. It provides face-to-face education in sciences at both its Auckland and Manawātū campuses.

Our heritage is in agriculture, food and the sciences, and today we are among the world leaders in education and research. We also bring our best to new areas including computer science, information technology and the built environment. These are exciting areas for study and provide excellent opportunities for growth and development.

- Agriculture and Horticulture
- Built environment and construction
- Computer science and information technology
- Earth and Environmental science
- Engineering
- Food technology and nutrition
- Natural sciences
- Veterinary and animal science



## OUR RESEARCH INCLUDES:

We provide face-to-face education in sciences at both Auckland and Manawātū campuses. This includes research and teaching in:

- agriculture, horticulture, food science and technology, animal and veterinary science which provides knowledge and capability critical to the vitality of Aotearoa New Zealand’s agrifood sector, and
- the life, environmental, computational and physical sciences within the natural and built environments that contribute fundamental knowledge and capability for the betterment of New Zealand, in applied fields such as agriculture and food technology.

## ACADEMIC EXCELLENCE



**QUINN VU (QUYÊN VŨ HAI DUONG, VIETNAM)**  
Bachelor Food Technology (with Honours) 2021  
Auckland campus

Food is my passion; I love creativity. Food is central to our lives - not only for survival but for connecting people and communities. In school, I always loved solving problems in the sciences (Maths, Chemistry and Physics). I didn’t realize creating food could be technical and isn’t just done by chefs!

Food Technology is about making food safe, preserving foods for longer, preventing waste, combining flavours and textures to deliver new food experiences to consumers and so on.

I live in Wellington and work as a Food Technologist at Groenz. My job involves creating new sauces and dressings, supervising factory trials for new products and supporting cross-functional teams including members from sales, quality, supply chain and operations.

My degree from Massey prepared me well for my career. It provided not only technical knowledge but applications in the food industry, as well as teamwork and communication skills. I was lucky to be sponsored by Calocurb for my final year project and helped develop snacks with health benefits. The best aspect of Massey was the support from all the lecturers and especially my classmates.

## SUCCESSFUL GRADUATE



**DR GORDEN JIANG**  
GUANGZHOU, CHINA  
Master of Environmental Management 2016  
PhD 2021

Originally from Guangzhou, China, Gorden came to New Zealand in 2014 to study the Master of Environmental Management (MEnvMgmt) at Massey University in Palmerston North. During his study, he took the GIS (Geographic Information Systems) paper and fell in love with maps and crunching data.

After completing his master’s degree, he started doctoral research within the field of precision agriculture. His research developed new, machine learning-based tools in GIS to help farmers optimise crop management inputs. Following his PhD, Gorden joined Wairoa District Council in New Zealand, working as a GIS officer, managing the councils GIS infrastructure for the community.

**CONTACT US**  
[science@massey.ac.nz](mailto:science@massey.ac.nz)

**VISIT**  
[massey.ac.nz/science](https://massey.ac.nz/science)

## WORLD RANKINGS

Massey is ranked 28th in Veterinary Science and is the No. 1 university in New Zealand for Agriculture and Forestry, according to the QS (Quacquarelli Symonds) rankings. Massey is ranked as one of the top 75 Universities worldwide (out of 300) for Food Technology, according to the Shanghai Rankings.







**ADDITIONAL  
NON-TUITION FEES**

[massey.ac.nz/fees](https://massey.ac.nz/fees)

**FIND OUT MORE ABOUT  
STUDENT VISA AND  
IMMIGRATION COSTS**

[immigration.govt.nz](https://immigration.govt.nz)

# Accommodation and living costs

## MASSEY HALLS

Massey Halls are our accommodation facilities, and we aim to give you the best student experience and support during your university years. Our Halls have dedicated staff to help navigate your priorities, connect you with other residents and encourage you to join the many events and activities that are available.

### WHY CHOOSE MASSEY HALLS?

- Location** We are situated either on campus or within a short walking distance of the University. Everything you need is nearby, such as shops, bars and restaurants.
- Support** We have a team of staff to support you 24/7 and our Residential Assistants live on campus.
- Friendships** We focus on building our community from the start. You will live within a community of Massey University students, and will have lots of opportunities to meet people and make life-long friends from around the world.
- Better grades** Research shows that students living in university-provided accommodation tend to achieve better results.
- Leadership** We like to give our residents opportunities to take on leadership roles, such as becoming a floor warden, hall representative and – once you have been with us a year – you can apply to join our team and become a Residential Assistant.

**Activities and events** We offer a full, varied residential life programme, so there is no excuse not to get involved. We run welcome programmes to help you settle into life at Massey University.

We like to think we are your home away from home, where you feel like you are among friends and family.

**Safe and secure** Our buildings are safe and secure, with key fob security access to buildings. We have a security team that does regular checks through the day and night.

**Homestay** This option gives you the opportunity to live with a local family in their home, and experience New Zealand culture. This is a great way to improve your English language. You will be provided with three meals a day and have support from our homestay pastoral care team.

## LIVING COSTS

As well as tuition fees, you will need to pay for textbooks, non-tuition fees and your personal expenses.

At the airport, on arrival in New Zealand, you are required to pay a \$35 International Visitor and Tourism Conservation Levy.

If you enter New Zealand on a student visa, Immigration NZ requires you to have NZ\$20,000 available in addition to your course fees for each year you'll be studying in New Zealand, plus \$1500 for return airfare. Living costs can vary considerably depending upon accommodation option, location and personal spending habits, so you may require more money than this.



## ACCOMMODATION COSTS

### ACCOMMODATION OPTION

#### AUCKLAND CAMPUS

#### MANAWATŪ CAMPUS

#### WELLINGTON CAMPUS

#### Accommodation Type

- All rooms are single occupancy.
- Halls of Residence: meals provided
  - 4/5 bedroom apartments: no meals
  - Studio units: No meals

- All rooms are single occupancy.
- Various halls: meals provided
  - Various halls: no meals

- All rooms are single occupancy.
- The Cube**
- 3/5 bedroom apartments: no meals
  - Studio units: no meals
- Kainga Rua**
- Single rooms: no meals
- Whanake Hall**
- Single rooms: no meals

#### Massey Halls Catered

\$17,360 (40 weeks)

From \$17,360 (40 weeks)

Not Available

#### Massey Halls Self-Catered

From \$12,520 (40 weeks)

From \$10,000 (40 weeks)

From \$14,322 (42 weeks)

#### Homestay Catered

\$325 per week

\$280 per week

Contact the Wellington Homestay team for more information.

#### Notes:

- Costs are approximate based on 2024 fees and are in New Zealand dollars (NZD)
- Auckland is the largest of the three cities, so you can expect the cost of living to be higher
- Catered Halls provides a two meal a day meal plan (lunch and dinner Monday - Friday and brunch and dinner Saturday - Sunday). Some accommodation options may also have additional costs for items such as laundry and car parking, depending on location.
- Private accommodation options can be found on [trademe.co.nz](http://trademe.co.nz)

#### MORE INFO AT

[massey.ac.nz/accommodation](http://massey.ac.nz/accommodation)

#### Apply for a Massey University Pathway Programme

[college.massey.ac.nz](http://college.massey.ac.nz)

# Pathways to Massey University

### ACADEMIC PATHWAYS

Massey University College prepares you for a seamless transition into a wide range of degrees at the University. Benefit from small class sizes and personalised support while undertaking a qualification that will help you gain the academic and English language skills necessary to succeed at university and beyond.

### ENGLISH LANGUAGE PATHWAYS

Our language pathway qualifications will give you the confidence and skills to take on our foundational qualification, or meet the University's academic English language requirements for degree-level study.

### WHY STUDY A PATHWAY QUALIFICATION?

- Guaranteed entry into your university degree upon successful completion and meeting entry requirements for special entry degrees.
- These Programmes are designed to include relevant subjects to prepare you for your degree.
- Get to know New Zealand's educational system and unique Māori culture.
- Excellent academic, welfare and careers support system.



# Student exchange

As an international student, you are also eligible to participate in our student exchange programme and can therefore choose to study for one or two semesters of your degree at over 400 institutions in more than 50 countries. [massey.ac.nz/studentexchange](http://massey.ac.nz/studentexchange)



# International student support

**OUR INTERNATIONAL STUDENT SUPPORT TEAMS ARE HERE TO HELP YOU WITH VISA RENEWALS, INSURANCE, ACCOMMODATION, TRANSPORT AND GENERAL CAMPUS INFORMATION.**

**WE ALSO CONNECT STUDENTS TO OTHER SUPPORT SERVICES. WE RUN AN INTERNATIONAL REGISTRATION AND WELCOME PROGRAMME TO HELP YOU SETTLE IN, AND RUN A NUMBER OF EVENTS AND ACTIVITIES THROUGHOUT THE SEMESTER.**

## **STUDY SUPPORT**

The Centre for Teaching and Learning aims to help you develop good study practices and examination skills. They offer regular workshops as well as individual consultations.

[learning.massey.ac.nz](https://learning.massey.ac.nz)

## **CAREER SERVICES**

Career Services can help you to explore and plan your career, source job opportunities, and build your employability skills. We work with employers and academic staff to offer you career events, industry presentations, career and skills workshops, and seminars.

[massey.ac.nz/careers](https://massey.ac.nz/careers)

## **RECREATION**

Massey is committed to ensuring an active, enriching campus life and has excellent facilities on each of our campuses as well as associations and clubs to meet the needs of the student community. We have over 100 student-run clubs where you can meet, have fun and make new friends.

[recreation.massey.ac.nz](https://recreation.massey.ac.nz)





### **THE EDUCATION (PASTORAL CARE OF TERTIARY AND INTERNATIONAL LEARNERS) CODE OF PRACTICE 2021**

The Ministry of Education has established a comprehensive Code of Practice for the Pastoral Care of Tertiary and International Learners. Massey University is bound by this Code. Copies of the Code are available from the NZQA [here](#) or see [www.nzqa.govt.nz/providers-partners/tertiary-and-international-learners-code/know-the-code/](http://www.nzqa.govt.nz/providers-partners/tertiary-and-international-learners-code/know-the-code/)

### **IMMIGRATION**

All international students must hold a valid student visa to be eligible to study in New Zealand. Full details of immigration requirements, advice on rights to employment in New Zealand while studying, and reporting requirements are available from Immigration New Zealand.

[immigration.govt.nz](http://immigration.govt.nz)

### **STUDY AND WORK IN NEW ZEALAND**

New Zealand Immigration provides options for students to work while studying. Depending on your area of study, you may also have the opportunity to stay and work in New Zealand for up to four years, and possibly even gain residency.

[naumainz.studyinnewzealand.govt.nz](http://naumainz.studyinnewzealand.govt.nz)

### **HEALTH SERVICES**

There are Health and Counselling Centres on all our campuses, which are designed to provide students with a comprehensive range of professional and confidential health services. These services are intended to keep you active, healthy, and able to achieve your goals.

[massey.ac.nz/health-and-counselling](http://massey.ac.nz/health-and-counselling)

### **ELIGIBILITY FOR HEALTH SERVICES**

Most international students are not entitled to publicly funded health services while in New Zealand. If you receive medical treatment during your visit, you may be liable for the full cost of that treatment. Full details on entitlements to publicly funded health services are available through the Ministry of Health.

[moh.govt.nz](http://moh.govt.nz)

### **MEDICAL AND TRAVEL INSURANCE**

International students (including group students) must have appropriate and current medical and travel insurance while in New Zealand. Insurance coverage should include travel costs, medical care, and costs associated with repatriation, expatriation, and funeral expenses.

Our preferred provider is InsuranceSafeNZ.

[insurancesafenz.com](http://insurancesafenz.com)

### **ACCIDENT INSURANCE**

The Accident Compensation Corporation provides accident insurance for all New Zealand citizens, residents, and temporary visitors to New Zealand, but you may still be liable for all other medical and related costs.

[acc.co.nz](http://acc.co.nz)

### **SETTLING INTO LIFE IN NEW ZEALAND**

NauMai NZ is a digital platform developed to support international students as they transition to a new culture and life in New Zealand. This platform provides reliable and up-to-date information about living and studying in New Zealand.

[naumainz.studyinnewzealand.govt.nz](http://naumainz.studyinnewzealand.govt.nz)

### **INTERNATIONAL CONTRACT DISPUTE RESOLUTION SCHEME (DRS)**

DRS is an independent dispute resolution scheme established by the New Zealand Government. Its objective is to encourage swift settlement of contractual and financial disputes between international students and their providers in New Zealand.

[istudent.org.nz](http://istudent.org.nz)

### **NEW ZEALAND LANGUAGE AND CULTURE**

Massey University offers a free online qualification that introduces you to Māori language and culture.

[massey.ac.nz/toromai](http://massey.ac.nz/toromai)

# Qualifications available to international students in New Zealand

This section provides a guide to qualifications available to international students interested in studying at a Massey University campus in New Zealand. Tuition fees quoted are estimates only, are in New Zealand dollars, include GST, and are based on 202 fees.

**Tuition fees quoted are based on 120 credits of study within the qualifications, unless stated otherwise.**

[Check the Massey website for the most up-to-date fee information.](#)

**Each 15 credit course requires approximately 10-12.5 hours each week of class and study time.**

Please check the Massey University website for up-to-date fees and qualifications: [massey.ac.nz](https://massey.ac.nz)

If you are ready to apply, please visit [massey.ac.nz/international](https://massey.ac.nz/international)

## ENGLISH LANGUAGE AND PATHWAY PROGRAMMES

QUALIFICATION				START DATE	DURATION	COST
	Auckland	Palmerston North	Wellington			
<a href="#">General English</a>	A			Feb, Mar, Apr, May, July, Aug, Oct or Nov	5 weeks	NZ\$2,945 / per week \$499
<a href="#">English for Academic Purposes 1</a>	A			Feb, Apr, July or Nov	5 weeks	NZ\$4,990 / per week \$499
<a href="#">English for Academic Purposes 2</a>	A			Apr, July or Oct		NZ\$4,990 / per week \$499
<a href="#">Foundation Certificate (International)</a>	A			Mar, June or Oct		NZ\$26,400
<a href="#">Foundation Certificate (International – Accelerated)</a>	A			Mar or Oct		NZ\$13,200
<a href="#">Diploma (Business)</a>	A			Feb, July or Oct		NZ\$30,680
<a href="#">Graduate Diploma (Management)</a>	A			Feb, July or Oct		NZ\$32,480
<a href="#">Graduate Diploma (Marketing)</a>	A			Feb, July or Oct		NZ\$32,480

## CERTIFICATES AND DIPLOMAS

QUALIFICATION				START DATE	DURATION	COST
	Auckland	Palmerston North	Wellington			
Certificate in Arts	A	P	W	Feb or July	1 semester	NZ\$15,230
Certificate in Business Studies	A	P	W	A,P: Feb or July W: Feb	1 semester	NZ\$16,940
Certificate in Science and Technology	A	P	W	Feb or July	1 semester	NZ\$18,820
Certificate in Visual Arts			W	Feb, July or Nov	1 semester	NZ\$20,280
Diploma in Arts						
Creative Writing	A	P		Feb or July	1 year	NZ\$37,470
Economics	A	P		Feb or July**	1 year	NZ\$33,880
English	A	P		Feb or July	1 year	NZ\$30,450
Environmental Studies		P		Feb or July**	1 year	NZ\$37,640
Geography		P		Feb or July**	1 year	NZ\$37,640
History	A	P		Feb or July**	1 year	NZ\$30,450
Indigenous Psychologies	A	P		Feb or July**	1 year	NZ\$30,450
Linguistics	A	P		Feb or July**	1 year	NZ\$30,450
Media Studies	A	P		Feb or July	1 year	NZ\$30,450



QUALIFICATION				START DATE	DURATION	COST
	Auckland	Palmerston North	Wellington			
Philosophy	A	P		Feb or July**	1 year	NZ\$30,450
Politics and International Relations	A	P		Feb or July	1 year	NZ\$30,450
Psychology	A	P		Feb or July**	1 year	NZ\$37,640
Social Anthropology	A	P		Feb or July**	1 year	NZ\$30,450
Sociology	A	P		Feb or July**	1 year	NZ\$30,450
Statistics	A	P		Feb or July**	1 year	NZ\$30,450
Without specialisation	A	P		Feb or July**	1 year	NZ\$30,450-37,640
<b>Diploma in Business Studies</b>						
Without specialisation	A	P	W	A: Feb P, W Feb or July	1 year	NZ\$33,880
<b>Diploma in Science and Technology</b>						
	A	P		Feb or July	1 year	NZ\$37,640
<b>Diploma in Visual Arts</b>						
			W	Feb, July or Nov	1 year	NZ\$37,470

## STUDY ABROAD

Massey University welcomes students from around the world to complete a semester or year of Study Abroad on one of our three campuses in New Zealand, or online from their home country:

[massey.ac.nz/studyabroad](https://massey.ac.nz/studyabroad)

QUALIFICATION				START DATE	DURATION	COST
	Auckland	Palmerston North	Wellington			
Study Abroad	A	P	W	Feb or July	1 semester	NZ\$12,500 per semester

## BACHELOR'S DEGREES

Tuition fees quoted are based on 120 credits of study within the qualifications, unless stated otherwise. Please note that most bachelor's degrees are 360 credits, with some being longer. Each 15-credit course requires approximately 10-12.5 hours each week of class and study time.

QUALIFICATION				START DATE	DURATION	COST
	Auckland	Palmerston North	Wellington			
Bachelor of Accountancy	A	P		A: Feb or July P: Feb	3 years	NZ\$33,880
<b>Bachelor of Agribusiness</b>						
Farm Management		P		Feb	3 years	NZ\$37,640
International Agribusiness		P		Feb or July	3 years	NZ\$33,880
Rural Valuation		P		Feb	3 years	NZ\$33,880
<b>Bachelor of Agricultural Science</b>						
		P		Feb	3 years	NZ\$37,640
<b>Bachelor of Animal Science</b>						
Animal Genetics and Breeding		P		Feb	3 years	NZ\$37,640
Animal Nutrition and Growth		P		Feb	3 years	NZ\$37,640
Animal Welfare		P		Feb	3 years	NZ\$37,640
Equine Science		P		Feb	3 years	NZ\$37,640
<b>Bachelor of Arts</b>						
Business Psychology	A	P		Feb or July	3 years	NZ\$37,640
Economics	A	P		Feb or July	3 years	NZ\$33,880
Education+	A	P		Feb or July	3 years	NZ\$30,450

QUALIFICATION				START DATE	DURATION	COST
	Auckland	Palmerston North	Wellington			
Environmental Studies	A	P		Feb	3 years	NZ\$37,640
Geography		P		Feb or July	3 years	NZ\$37,640
Linguistics	A		W	Feb	3 years	NZ\$30,450
Mathematics	A	P		Feb or July	3 years	NZ\$30,450
Psychology	A	P		Feb or July	3 years	NZ\$37,640
<b>Bachelor of Aviation Air Transport Pilot (Aeroplane Option)</b>						
Year 1		P		Jan or July	1 year	NZ\$105,810
Year 2		P		Jan or July	1 year	NZ\$123,470
Year 3		P		Jan or July	1 year	NZ\$40,770
<b>Bachelor of Aviation Management</b>		P		Feb or July	3 years	NZ\$33,880
<b>Bachelor of Business</b>						
Accountancy	A	P		A: Feb or July; P: Feb	3 years	NZ\$33,880
Applied Professional Practice		P		Feb	3 years	NZ\$33,880
Business Analytics	A			Feb	3 years	NZ\$33,880
Economics	A	P		Feb or July	3 years	NZ\$33,880
Finance	A	P		Feb or July	3 years	NZ\$33,880
Financial Planning and Advice	A			Feb or July	3 years	NZ\$33,880
Global Communication	A			Feb	3 years	NZ\$33,880
Human Resource Management and Employment Relations	A	P		Feb	3 years	NZ\$33,880
International Business	A			Feb	3 years	NZ\$33,880
Management	A	P		Feb	3 years	NZ\$33,880
Marketing	A	P		Feb or July	3 years	NZ\$33,880
Organisational Technology Management	A			Feb	3 years	NZ\$33,880
Property	A	P		Feb or July	3 years	NZ\$33,880
<b>Bachelor of Commercial Music</b>						
Music Industry			W	Feb	3 years	NZ\$37,470
Music Technology			W	Feb	3 years	NZ\$37,470
Music Practice			W	Feb	3 years	NZ\$37,470
<b>Bachelor of Communication</b>						
Communication Management	A		W	Feb or July	3 years	NZ\$33,880
Digital Marketing	A		W	Feb or July	3 years	NZ\$33,880
Expressive Arts			W	Feb or July	3 years	NZ\$37,470
Expressive Arts and Media Studies			W	Feb or July	3 years	NZ\$30,450
Journalism			W	Feb or July	3 years	NZ\$33,880
Linguistics			W	Feb	3 years	NZ\$30,450
Media Studies			W	Feb or July	3 years	NZ\$30,450
Public Relations	A		W	Feb or July	3 years	NZ\$33,880
<b>Bachelor of Construction</b>						
Construction Management	A			Feb	3 years	NZ\$40,560
Quantity Surveying	A			Feb	3 years	NZ\$40,560
<b>Bachelor of Design with Honours<sup>2</sup></b>						



QUALIFICATION				START DATE	DURATION	COST
	Auckland	Palmerston North	Wellington			
Concept Design			W	Feb or July**	4 years	NZ\$37,470
Fashion Design			W	Feb or July**	4 years	NZ\$37,470
Industrial Design			W	Feb or July**	4 years	NZ\$37,470
Integrated Design			W	Feb or July**	4 years	NZ\$37,470
Photography			W	Feb or July**	4 years	NZ\$37,470
Spatial Design			W	Feb or July**	4 years	NZ\$37,470
Textile Design			W	Feb or July**	4 years	NZ\$37,470
Visual Communication Design			W	Feb or July**	4 years	NZ\$37,470
<b>Bachelor of Engineering with Honours</b>						
Chemical and Bioprocess Engineering			P	Feb	4 years	NZ\$40,560
Electronics and Computer Engineering	A			Feb	4 years	NZ\$41,020
Mechatronics	A	P		Feb	4 years	NZ\$40,560
<b>Bachelor of Fine Arts with Honours<sup>2</sup></b>						
			W	Feb or July**	4 years	NZ\$37,470
<b>Bachelor of Food Technology with Honours</b>						
Food Process Engineering			P	Feb	4 years	NZ\$40,560
Food Product Technology	A	P		Feb	4 years	NZ\$40,560
<b>Bachelor of Horticultural Science</b>						
			P	Feb	3 years	NZ\$37,640
<b>Bachelor of Information Sciences</b>						
Computer Science	A			Feb	3 years	NZ\$37,460
Data Science	A			Feb	3 years	NZ\$36,490
Information Systems	A			Feb or July	3 years	NZ\$36,490
Information Technology	A			Feb or July	3 years	NZ\$40,560
Software Engineering	A			Feb	3 years	NZ\$40,560
<b>Bachelor of Māori Visual Arts</b>						
			P	Feb	3 years	NZ\$37,470
<b>Bachelor of Resource and Environmental Planning</b>						
			P	Feb or July	3 years	NZ\$40,560
<b>Bachelor of Science</b>						
Chemistry			P	Feb or July	3 years	NZ\$37,640
Computer Science	A			Feb	3 years	NZ\$37,640
Earth Science			P	Feb or July	3 years	NZ\$37,640
Ecology and Conservation	A	P		Feb or July	3 years	NZ\$37,640
Environmental Science			P	Feb	3 years	NZ\$37,640
Human Nutrition	A			Feb	3 years	NZ\$37,640
Mathematics	A	P		Feb or July	3 years	NZ\$30,450
Microbiology			P	Feb or July	3 years	NZ\$37,640
Molecular Cell Biology	A	P		Feb	3 years	NZ\$37,640
Physiology	A	P		Feb	3 years	NZ\$37,640
Plant Science			P	Feb or July	3 years	NZ\$37,640
Psychology	A	P		A Feb or July; P Feb	3 years	NZ\$37,640
Statistics			P	Feb or July	3 years	NZ\$30,450
Zoology	A	P		Feb or July	3 years	NZ\$37,640
<b>Bachelor of Screen Arts with Honours<sup>2</sup></b>						

QUALIFICATION				START DATE	DURATION	COST
	Auckland	Palmerston North	Wellington			
Animation			W	Feb or July	4 years	NZ\$40,560
Factual Production			W	Feb or July	4 years	NZ\$40,560
Film Production			W	Feb or July	4 years	NZ\$40,560
Game Development			W	Feb or July	4 years	NZ\$40,560
Immersive Media			W	Feb or July	4 years	NZ\$40,560
Media Technology			W	Feb or July	4 years	NZ\$40,560
Visual Effects			W	Feb or July	4 years	NZ\$40,560
<b>Bachelor of Sport and Exercise</b>						
Exercise Prescription			P	Feb or July	3 years	NZ\$37,640
Physical Education			P	Feb or July	3 years	NZ\$37,640
Sport Development			P	Feb or July	3 years	NZ\$37,640
<b>Bachelor of Veterinary Science</b>						
Pre-selection			P	Feb	1 semester	NZ\$18,820
Professional Phase			P	July	4.5 years	NZ\$74,950

\*\* Due to course sequencing, it may not be possible to complete within the minimum time-frame. One further semester will be required.  
<sup>2</sup> Students starting in July may complete in 3.5 years, provided they complete Summer School in the first year  
+ This programme requires compulsory distance courses

## GRADUATE CERTIFICATES AND DIPLOMAS

Tuition fees quoted are based on 120 credits of study within the qualifications, unless stated otherwise. Each 15 credit course requires approximately 10-12.5 hours each week of class and study time.

QUALIFICATION				START DATE	DURATION	COST
	Auckland	Palmerston North	Wellington			
<b>Graduate Certificate in Arts</b>						
Politics and International Relations	A	P		Feb or July	1 semester	NZ\$14,500
Graduate Certificate in Science and Technology	A	P		Feb or July	1 semester	NZ\$18,820
<b>Graduate Diploma in Arts</b>						
Economics	A	P		Feb or July**	1 year	NZ\$30,450
Education**		P		Feb** or July**	1.5 years	NZ\$30,450
Environmental Studies	A	P		Feb or July**	1 year	NZ\$37,640
History		P		Feb or July**	1 year	NZ\$30,450
Mathematics	A	P		Feb or July**	1 year	NZ\$30,450
Psychology	A	P		Feb or July**	1 year	NZ\$37,640
Statistics		P		Feb	1 year	NZ\$36,490
Without specialisation	A	P	W	Feb or July**	1 year	NZ\$30,450-37,640
<b>Graduate Diploma in Aviation</b>						
Flight Instruction		P		Feb or July	1 year	NZ\$38,250
<b>Graduate Diploma in Business Studies</b>						
Human Resource Management	A	P		Feb	1 year	NZ\$33,880
Personal Financial Planning	A			Feb	1 year	NZ\$33,880



QUALIFICATION				START DATE	DURATION	COST
	Auckland	Palmerston North	Wellington			
Without specialisation	A	P		Feb	1 year	NZ\$33,880
Graduate Diploma in Design						
Without specialisation			W	Feb	1 year	NZ\$37,470
Graduate Diploma in Facilities Management	A			Feb or July	1 year	NZ\$34,750
Graduate Diploma in Fine Arts			W	Feb	1 year	NZ\$35,680
Graduate Diploma in Information Sciences	A	P		Feb or July	1 year	NZ\$34,750
Graduate Diploma of Learning and Teaching						
Primary (150 credits)	A	P		Jan	1 year	NZ\$30,450
Secondary (150 credits)		P		Jan	1 year	NZ\$30,450
Graduate Diploma in Science and Technology	A	P		Feb or July	1 year	NZ\$40,560
Graduate Diploma in Screen Arts			W	Feb	1 year	NZ\$40,560

\*\* Due to course sequencing, it may not possible to complete within the minimum time-frame. One further semester will be required.

QUALIFICATION				START DATE	DURATION	COST
	Auckland	Palmerston North	Wellington			
<b>POSTGRADUATE CERTIFICATES AND DIPLOMAS</b>						
Tuition fees quoted are based on 120 credits of study within the qualifications, unless stated otherwise. Each 15 credit course requires approximately 10-12.5 hours each week of class and study time.						
Postgraduate Certificate in Applied Linguistics		P		Feb	1 semester	NZ\$17,290
Postgraduate Certificate in Arts						
Without specialisation	A	P		Feb or July	1 semester	NZ\$17,290
Postgraduate Certificate in Business						
Without specialisation	A	P	W <sup>3</sup>	Feb or July	1 semester	NZ\$17,730
Postgraduate Certificate in Science and Technology	A	P		Feb or July	1 semester	NZ\$17,290-22,780
Postgraduate Diploma in Agribusiness		P		Feb or July	1 year	NZ\$41,460
Postgraduate Diploma in Applied Linguistics		P		Feb or July**	1 year	NZ\$34,560
Postgraduate Diploma in Arts						
Economics	A	P		Feb or July**	1 year	NZ\$35,450
Geography		P		Feb or July**	1 year	NZ\$41,460
Politics and International Relations		P		Feb or July**	1 year	NZ\$34,560
Social Anthropology	A	P		Feb or July**	1 year	NZ\$34,560
Sociology	A	P		Feb or July**	1 year	NZ\$34,560
Postgraduate Diploma in Business	A	P	W <sup>3</sup>	Feb or July	1 year	NZ\$35,450
Postgraduate Diploma in Construction						
Construction Law	A			Feb or July	1 year	NZ\$41,020

QUALIFICATION				START DATE	DURATION	COST
	Auckland	Palmerston North	Wellington			
Construction Project Management	A			Feb or July	1 year	NZ\$44,660
Digital Built Environment	A			Feb or July	1 year	NZ\$44,660
Quantity Surveying	A			Feb or July	1 year	NZ\$41,020
Sustainable Built Environment	A			Feb or July	1 year	NZ\$44,660
Without specialisation	A			Feb or July	1 year	NZ\$44,660
<b>Postgraduate Diploma in Design</b>						
Without specialisation		W		Feb	1 year	NZ\$37,470
Postgraduate Diploma in Emergency Management <sup>1</sup>		W		Feb	1 year	NZ\$40,560
Postgraduate Diploma in Environmental Management		P		Feb or July	1 year	NZ\$45,540
Postgraduate Diploma in Fine Arts		W		Feb	1 year	NZ\$41,020
Postgraduate Diploma in Information Sciences	A			Feb or July	1 year	NZ\$41,020
Postgraduate Diploma in International Development		P		Feb or July	1 year	NZ\$34,560
Postgraduate Diploma in Journalism		W		Feb or July	1 year	NZ\$34,560
Postgraduate Diploma in Māori Visual Arts		P		Feb	1 year	NZ\$41,020
Postgraduate Diploma in Quality Systems	A			Feb or July	1 year	NZ\$35,450
<b>Postgraduate Diploma in Science and Technology</b>						
Agricultural Science		P		Feb or July	1 year	NZ\$45,540
Animal Science		P		Feb or July	1 year	NZ\$45,540
Biological Sciences	A	P		Feb or July	1 year	NZ\$41,460
Conservation Biology	A			Feb	1 year	NZ\$41,460
Earth Science		P		Feb or July	1 year	NZ\$41,460
Horticultural Science		P		Feb or July	1 year	NZ\$45,540
Plant Breeding		P		Feb	1 year	NZ\$45,540
Without specialisation	A	P		Feb or July	1 year	NZ\$41,460
Zoology		P		Feb or July	1 year	NZ\$41,460
Postgraduate Diploma in Screen Arts			W	Feb	1 year	NZ\$44,660
Postgraduate Diploma in Supply Chain Management	A			Feb or July	1 year	NZ\$35,450
<b>Postgraduate Diploma in Veterinary Science</b>						
Veterinary Epidemiology		P		Feb	1 year	NZ\$53,050
Veterinary Public Health		P		Feb	1 year	NZ\$53,050

## HONOURS DEGREES

### Bachelor of Arts (Hons)

Politics and International Relations	P			Feb or July	1 year	NZ\$34,560
--------------------------------------	---	--	--	-------------	--------	------------

### Bachelor of Construction (Hons)

(C) Coursework (R) Research

\*\* Due to course sequencing, it may not be possible to complete within the minimum time-frame. One further semester will be required.

<sup>1</sup> Taught in block mode



QUALIFICATION				START DATE	DURATION	COST
	Auckland	Palmerston North	Wellington			
Construction Management	A			Feb	1 year	NZ\$44,660
Quantity Surveying	A			Feb	1 year	NZ\$44,660

## MASTER'S DEGREES

See [this link](#) for an explanation of credit and study patterns.

Executive Master of Business Administration <sup>1</sup>	A			Feb	2 years	NZ\$35,450
Master of Agribusiness (R)		P		Feb	1.5 years	NZ\$45,540
Master of Analytics (C)						
Business	A			Feb to Feb	1 year	NZ\$35,450
Master of Applied Linguistics (C)						
Teaching English to Speakers of Other Languages		P		Feb or July**	1.5 years	NZ\$34,560
Without specialisation		P		Feb or July	1.5 years	NZ\$34,560
Master of Applied Social Work (C)	A			Feb	2 years	NZ\$34,560
Master of Aviation (C)		P		Feb or July	1.5 years	NZ\$35,450
Master of Arts						
Economics	A	P		Feb or July**	1.5 years	NZ\$35,450
Geography		P		Feb or July**	1.5 years	NZ\$41,460
Politics and International Relations		P		Feb or July**	1.5 years	NZ\$34,560
Social Anthropology	A	P		Feb or July**	1.5 years	NZ\$34,560
Sociology	A	P		Feb or July**	1.5 years	NZ\$34,560
Master of Business Administration						
Business Sustainability	A			Mar, July or Nov	1 year	NZ\$56,830
Global Business	A			Mar, July or Nov	1 year	NZ\$56,830
Without specialisation	A			Mar, July or Nov	1 year	NZ\$56,830
Master of Business Studies (R)						
Accountancy	A			Feb or July	1.5 years	NZ\$35,450
Economics	A	P		Feb or July	1.5 years	NZ\$35,450
Finance	A	P		Feb or July	1.5 years	NZ\$35,450
Human Resource Management	A	P		Feb	1.5 years	NZ\$35,450
Management	A	P		Feb	1.5 years	NZ\$35,450
Marketing	A			Feb or July	1.5 years	NZ\$35,450
Master of Construction						
Construction Law	A			Feb	1-1.5 years	NZ\$41,020
Construction Project Management	A			Feb	1-1.5 years	NZ\$44,660

QUALIFICATION				START DATE	DURATION	COST
	Auckland	Palmerston North	Wellington			
Digital Built Environment	A			Feb	1-1.5 years	NZ\$44,660
Quantity Surveying <sup>4</sup>	A			Feb	1-1.5 years	NZ\$41,020
Sustainable Built Environment	A			Feb	1-1.5 years	NZ\$44,660
Without specialisation	A			Feb	1-1.5 years	NZ\$44,660
Master of Design			W	Feb or July	1-1.5 years	NZ\$41,020
Master of Emergency Management <sup>1</sup>			W	Feb or July**	1.5 years	NZ\$40,560
Master of Engineering (R)						
Chemical and Bioprocess Engineering		P		Feb or July	1 year	NZ\$44,660
Electronics and Computer Engineering	A	P		Feb or July	1 year	NZ\$44,660
Mechatronics	A	P		Feb or July	1 year	NZ\$44,660
Master of Engineering Studies (C)						
Electronics and Computer Engineering	A			Feb or July	1 year	NZ\$44,660
Mechatronics	A	P		Feb or July	1 year	NZ\$44,660
Without specialisation	A	P		Feb or July	1 year	NZ\$44,660
Master of Environmental Management			P	Feb or July	1.5 years	NZ\$45,540
Master of Finance						
Financial Analytics and Research	A	P		Feb or July	1.5 years	NZ\$35,450
Risk Analytics	A	P		Feb or July	1*-1.5 years	NZ\$35,450
Master of Fine Arts						
Design			W	Feb	2 years	NZ\$41,020
Fine Arts			W	Feb	2 years	NZ\$41,020
Without specialisation			W	Feb	2 years	NZ\$41,020
Master of Food Safety and Quality (C)			P	Feb	1.5 years	NZ\$44,660
Master of Food Technology (R)	A	P		Feb	1.5 years	NZ\$44,660
Master of Information Sciences	A			Feb or July	1.5 years	NZ\$41,020
Master of International Development			P	Feb or July	1.5-2 years	NZ\$34,560
Master of Management (C)						
Communication			W	July	1.5 years	NZ\$35,450
Financial Economics	A			Feb or July	1.5 years	NZ\$35,450
Human Resource Management	A			Feb	1.5 years	NZ\$35,450
International Business	A			Feb	1.5 years	NZ\$35,450
Journalism			W	July	1.5 years	NZ\$35,450
Management	A			Feb	1.5 years	NZ\$35,450
Marketing	A			Feb or July	1.5 years	NZ\$35,450
Sustainability	A			Feb	1.5 years	NZ\$35,450



QUALIFICATION				START DATE	DURATION	COST
	Auckland	Palmerston North	Wellington			
Master of Māori Visual Arts		<b>P</b>		Feb	2 years	NZ\$41,020
Master of Professional Accountancy (C)	<b>A</b>			Feb or July	1.5 years	NZ\$37,680
Master of Quality Systems (C)	<b>A</b>			Feb or July	1.5 years	NZ\$35,450
<b>Master of Science (R)</b>						
Agricultural Science		<b>P</b>		Feb or July	1.5 years	NZ\$45,540
Animal Science		<b>P</b>		Feb	1.5 years	NZ\$45,540
Biological Sciences	<b>A</b>	<b>P</b>		Feb or July	1.5 years	NZ\$41,460
Chemistry		<b>P</b>		Feb	1.5 years	NZ\$41,460
Conservation Biology	<b>A</b>			Feb	1.5 years	NZ\$41,460
Earth Science		<b>P</b>		Feb or July	1.5 years	NZ\$41,460
Ecology		<b>P</b>		Feb	1.5 years	NZ\$41,460
Horticultural Science		<b>P</b>		Feb or July	1.5 years	NZ\$45,540
Human Nutrition	<b>A</b>			Feb	1.5 years	NZ\$41,460
Mathematics	<b>A</b>	<b>P</b>		Feb or July	1 year	NZ\$35,450
Plant Breeding		<b>P</b>		Feb	1.5 years	NZ\$41,460
Statistics	<b>A</b>	<b>P</b>		Feb or July	1 year	NZ\$35,450
Zoology	<b>A</b>	<b>P</b>		Feb or July	1.5 years	NZ\$41,460
Master of Speech and Language Therapy (R)	<b>A</b>			Feb	1.5 years	NZ\$44,460
Master of Supply Chain Management (C)	<b>A</b>			Feb or July	1.5 years	NZ\$35,450
<b>Master of Sustainable Development Goals (C)</b>						
Economics for Sustainability		<b>P</b>		Feb or July	1.5 years	NZ\$34,560
Environmental Sustainability		<b>P</b>		Feb or July**	1.5 years	NZ\$41,460
Global Development		<b>P</b>		Feb or July**	1.5 years	NZ\$37,890
<b>Master of Veterinary Studies</b>						
Epidemiology (C)		<b>P</b>		Feb	1.5 years	NZ\$53,050
Veterinary Public Health (R)		<b>P</b>		Feb	1.5 years	NZ\$53,050
Without specialisation		<b>P</b>		Feb	1.5 years	NZ\$53,050

## DOCTORAL DEGREES

Doctor of Philosophy (PhD) <sup>6</sup>	<b>A</b>	<b>P</b>	<b>W</b>	Any time	3-4 years	NZ\$7,460 - 9,2006
---	----------	----------	----------	----------	-----------	--------------------

(C) Coursework (R) Research

\*\* Due to course sequencing, it may not be possible to complete within the minimum time-frame. One further semester will be required.

<sup>1</sup> Taught in block mode

<sup>4</sup> This qualification is accredited by RICS

# Study online from your country

## THE LEADER IN ONLINE AND BORDERLESS EDUCATION

We have been providing distance education for almost 60 years and more than 350,000 people from all over the world have studied via distance with us.

We are ranked in the top 250 universities in the world and have five stars across nine categories (including Online) by QS World University Rankings. You can be confident your learning will meet the latest international standards, and your qualification will be well received wherever your journey takes you after you graduate.

### WHY STUDY ONLINE WITH MASSEY UNIVERSITY?

With Massey University, you can study fully online – you don't need to travel to New Zealand. The qualifications you obtain by studying online with Massey University are the same as you would receive if studying at one of our three campuses in New Zealand.

Studying online allows you to achieve your educational dreams while you are working, training or raising a family. Our online qualifications have been designed to fit around you – watch lectures or read materials wherever you might be, at a time that is suitable to your schedule. There are some great benefits to online learning including meeting the commitments you have at home and work, saving time and money.

It is important to note that Immigration New Zealand will not grant a student visa for study in New Zealand where the intended qualification of study is fully delivered online. If you hold a work permit you can study part-time via online learning. Please contact us for more information.

### ONLINE QUALIFICATIONS DESIGNED WITH YOU IN MIND

- Your online lectures are given by the same academic staff who teach on campus
- Online tools allow you to study when you can and still be in contact with your lecturer when you need to, and
- Our support services are here to help you attain your educational dream.

All students studying online have access to Stream – Massey's virtual learning community. It's a place where you can exchange ideas with fellow students and lecturers.

Depending on the course you are studying, Stream offers:

- The latest news on your subject
- Study notes
- Recent articles
- Online presentations
- Activities
- Assignments
- Quizzes
- Tests
- Online conversations and discussion forums

### HELPFUL SUPPORT

The key to studying online is having strategies and support people in place to help with challenges that may arise. With Massey University you are not studying alone! Our team have created a support service for our students living around the world. We're here to help you when you need advice.

### FEES

International students studying outside of New Zealand do not need to pay New Zealand Goods and Services Tax (GST). View all our online qualifications at [massey.ac.nz/global](https://massey.ac.nz/global)

# Online qualifications available internationally

This is a guide to qualifications available to international students interested in studying online from outside New Zealand. The 2024 tuition fees quoted are estimates only, are in New Zealand dollars and exclude New Zealand Goods and Services Tax (GST). Most students who study online enjoy 15% lower fees than students who study on campus, due to not having to pay New Zealand GST. However some countries, such as Australia, still require their residents to pay GST in line with their tax requirements.

Tuition fees quoted are based on 120 credits, as well as per 15 credit course (paper) of study within the qualifications unless stated otherwise. Each 15-credit course requires approximately 10-12.5 hours each week of class and study time. Online courses need to be chosen very carefully to ensure they do not require the student to travel to New Zealand for onshore contact. There are sufficient courses to complete the qualification that do not require onshore contact.



## CERTIFICATES AND DIPLOMAS

ONLINE QUALIFICATION	START DATE	DURATION (IF STUDIED FULL-TIME)	ONLINE COST	PER 15 CREDIT COURSE
Certificate in Arts	Feb, Jul** or Nov**	1 semester	NZ\$13,240	NZ\$3,310
Certificate in Border and Biosecurity**	Feb, July or Nov	1 semester	NZ\$13,240	NZ\$3,310
Certificate in Business Studies	Feb, July or Nov**	1 semester	NZ\$14,730	NZ\$3,690
Certificate in Science and Technology	Feb or July	1 semester	NZ\$16,370	NZ\$4,100
<b>Diploma in Arts</b>				
Creative Writing	Feb or July	1 year	NZ\$32,590	NZ\$4,080
Defence Studies	Feb or July**	1 year	NZ\$26,490	NZ\$3,320
Disability Studies	Feb or July**	1 year	NZ\$26,490	NZ\$3,320
Development Studies	Feb, Jul** or Nov**	1 year	NZ\$26,490	NZ\$3,320
Geography	Feb or July**	1 year	NZ\$32,730	NZ\$4,120
History	Feb, Jul** or Nov**	1 year	NZ\$26,490	NZ\$3,320
Indigenous Psychologies	Feb or July**	1 year	NZ\$26,490	NZ\$3,320
Media Studies	Feb or July**	1 year	NZ\$26,490	NZ\$3,320
Planning Studies	Feb, Jul** or Nov**	1 year	NZ\$26,490	NZ\$3,320
Politics and International Relations	Feb, Jul** or Nov**	1 year	NZ\$26,490	NZ\$3,320
Portuguese	Feb	1 year	NZ\$26,490	NZ\$3,320
Without specialisation	Feb, Jul** or Nov**	1 year	NZ\$26,490 - 32,730	
<b>Diploma in Business Studies</b>				
Without specialisation	Feb, July or Nov**	1 year	NZ\$29,470	NZ\$3,690
Diploma in Dairy Technology	Feb	1 year	NZ\$33,590	NZ\$4,200
Diploma in Facilities Management	Feb or July	1 year	NZ\$30,830	NZ\$3,860
Diploma in Science and Technology	Feb or July	1 year	NZ\$32,730	NZ\$4,100

\*\* Due to course sequencing, it may not be possible to complete within the minimum time-frame. One further semester will be required.

## BACHELOR'S DEGREES

ONLINE QUALIFICATION	START DATE	DURATION (IF STUDIED FULL-TIME)	ONLINE COST	PER 15 CREDIT COURSE
Bachelor of Accountancy	Feb, July or Nov**	3 years	NZ\$29,470	NZ\$3,690
<b>Bachelor of Arts</b>				
Business Psychology	Feb	3 years	NZ\$32,730	NZ\$4,100
Chinese	Feb, July or Nov**	3 years	NZ\$26,490	NZ\$3,320
Classical Studies	Feb, July or Nov**	3 years	NZ\$26,490	NZ\$3,320
Creative Writing	Feb or July	3 years	NZ\$32,590	NZ\$4,080
Defence Studies	Feb, July or Nov**	3 years	NZ\$26,490	NZ\$3,320
Economics	Feb, July or Nov**	3 years	NZ\$29,470	NZ\$3,690
Education	Feb, July or Nov**	3 years	NZ\$26,490	NZ\$3,320
Educational Psychology	Feb	3 years	NZ\$32,730	NZ\$4,100
English	Nov**	3 years	NZ\$26,490	NZ\$3,320
Environmental Studies	Feb, July or Nov**	3 years	NZ\$32,730	NZ\$4,100
Geography	Feb, July or Nov**	3 years	NZ\$32,730	NZ\$4,100
History	Feb, July or Nov**	3 years	NZ\$26,490	NZ\$3,320

Fees and qualifications available are correct for 2023 and may be subject to change for 2024.

ONLINE QUALIFICATION	START DATE	DURATION (IF STUDIED FULL-TIME)	ONLINE COST	PER 15 CREDIT COURSE
Japanese	Feb, July or Nov**	3 years	NZ\$26,490	NZ\$3,320
Linguistics	Feb, July or Nov**	3 years	NZ\$26,490	NZ\$3,320
Māori Knowledge	Feb or July	3 years	NZ\$26,490	NZ\$3,320
Mathematics	Feb, July or Nov**	3 years	NZ\$26,490	NZ\$3,320
Media Studies	Feb, July or Nov**	3 years	NZ\$26,490	NZ\$3,320
Philosophy	Feb, July or Nov**	3 years	NZ\$26,490	NZ\$3,320
Politics and International Relations	Feb, July or Nov**	3 years	NZ\$26,490	NZ\$3,320
Psychology	Feb, July or Nov**	3 years	NZ\$32,730	NZ\$4,100
Security Studies	Feb, July or Nov**	3 years	NZ\$26,490	NZ\$3,320
Social Anthropology	Feb, July or Nov**	3 years	NZ\$26,490	NZ\$3,320
Sociology	Feb, July or Nov**	3 years	NZ\$26,490	NZ\$3,320
Spanish	Feb, July or Nov**	3 years	NZ\$26,490	NZ\$3,320
Statistics	Feb or July **	3 years	NZ\$26,490	NZ\$3,320
Te Reo Māori	Feb or July **	3 years	NZ\$26,490	NZ\$3,320
<b>Bachelor of Aviation Management</b>	Feb or July	3 years	NZ\$29,470	NZ\$3,690
<b>Bachelor of Business</b>				
Accountancy	Feb, July or Nov**	3 years	NZ\$29,470	NZ\$3,690
Applied Professional Practice	Feb	3 years	NZ\$29,470	NZ\$3,690
Business Analytics	Feb or July**	3 years	NZ\$29,470	NZ\$3,690
Economics	Feb or July	3 years	NZ\$29,470	NZ\$3,690
Finance	Feb or July	3 years	NZ\$29,470	NZ\$3,690
Financial Planning and Advice	Feb or July	3 years	NZ\$29,470	NZ\$3,690
Global Communication	Feb or July**	3 years	NZ\$29,470	NZ\$3,690
Human Resource Management and Employment Relations	Feb or July **	3 years	NZ\$29,470	NZ\$3,690
International Business	Feb or July **	3 years	NZ\$29,470	NZ\$3,690
Management	Feb or July **	3 years	NZ\$29,470	NZ\$3,690
Marketing	Feb or July	3 years	NZ\$29,470	NZ\$3,690
Organisational Technology Management	Feb or July **	3 years	NZ\$29,470	NZ\$3,690
Property	Feb or July	3 years	NZ\$29,470	NZ\$3,690
<b>Bachelor of Communication</b>				
Communication Management	Feb or July	3 years	NZ\$29,470	NZ\$3,690
Digital Marketing	Feb or July	3 years	NZ\$29,470	NZ\$3,690
Expressive Arts	Feb or July	3 years	NZ\$32,590	NZ\$4,080
Journalism	Feb or July	3 years	NZ\$29,470	NZ\$3,690
Linguistics	Feb, July**	3 years	NZ\$26,490	NZ\$3,320
Media Studies	Feb or July	3 years	NZ\$26,490	NZ\$3,320
Public Relations	Feb or July	3 years	NZ\$29,470	NZ\$3,690
<b>Bachelor of Construction</b>				
Construction Management	Feb	3 years	NZ\$35,270	NZ\$4,410
Quantity Surveying	Feb	3 years	NZ\$35,270	NZ\$4,410
<b>Bachelor of Information Sciences</b>				
Computer Science	Feb	3 years	NZ\$32,730	NZ\$4,100



ONLINE QUALIFICATION	START DATE	DURATION (IF STUDIED FULL-TIME)	ONLINE COST	PER 15 CREDIT COURSE
Data Science	Feb	3 years	NZ\$34,250	NZ\$4,290
Information Systems	Feb or July	3 years	NZ\$34,250	NZ\$4,290
Information Technology	Feb or July	3 years	NZ\$34,250	NZ\$4,290
Software Engineering	Feb	3 years	NZ\$34,250	NZ\$4,290
Bachelor of Resource and Environmental Planning	Feb or July **	4 years	NZ\$36,050	NZ\$4,510
<b>Bachelor of Science</b>				
Computer Science	Feb	3 years	NZ\$32,730	NZ\$4,100
Mathematics	Feb or July	3 years	NZ\$26,490	NZ\$3,320
Psychology	Feb or July	3 years	NZ\$32,730	NZ\$4,100
Statistics	Feb or July	3 years	NZ\$26,490	NZ\$3,320

## GRADUATE CERTIFICATES AND DIPLOMAS

Each 15 credit course requires approximately 10-12.5 hours each week of class and study time.

ONLINE QUALIFICATION	START DATE	DURATION (IF STUDIED FULL-TIME)	ONLINE COST	PER 15 CREDIT COURSE
<b>Graduate Certificate in Arts</b>				
Politics and International Relations	Feb, July or Nov **	1 semester	NZ\$12,620	NZ\$3,160
Graduate Certificate in Emergency Management	Feb, July ** or Nov **	1 semester	NZ\$13,250	NZ\$3,320
Graduate Certificate in Science and Technology	Feb or Jul	1 semester	NZ\$16,370	NZ\$4,100
<b>Graduate Diploma in Arts</b>				
Chinese	Feb or July **	1 year	NZ\$26,490	NZ\$3,320
Classical Studies	Feb or July **	1 year	NZ\$26,490	NZ\$3,320
Creative Writing	Feb, July or Nov**	1 year	NZ\$32,590	NZ\$4,080
Defence Studies	Feb, July or Nov**	1 year	NZ\$26,490	NZ\$3,320
Development Studies	Feb or July **	1 year	NZ\$26,490	NZ\$3,320
Economics	Feb, July or Nov**	1 year	NZ\$29,470	NZ\$3,690
Education	Feb, July or Nov**	1 year	NZ\$26,490	NZ\$3,320
Educational Psychology	Feb	1 year	NZ\$32,730	NZ\$4,100
English	Feb or July	1 year	NZ\$26,490	NZ\$3,320
Environmental Studies	Feb or July	1 year	NZ\$32,730	NZ\$4,100
Geography	Feb or July **	1 year	NZ\$32,730	NZ\$4,100
History	Feb, July ** or Nov**	1 year	NZ\$26,490	NZ\$3,320
Japanese	Feb, July ** or Nov**	1 year	NZ\$26,490	NZ\$3,320
Linguistics	Feb, July ** or Nov**	1 year	NZ\$26,490	NZ\$3,320
Māori Knowledge	Feb	1 year	NZ\$26,490	NZ\$3,320
Mathematics	Feb, July ** or Nov**	1 year	NZ\$26,490	NZ\$3,320
Media Studies	Feb, July or Nov**	1 year	NZ\$26,490	NZ\$3,320
Philosophy	Feb or July **	1 year	NZ\$26,490	NZ\$3,320
Politics and International Relations	Feb, July or Nov**	1 year	NZ\$26,490	NZ\$3,320
Psychology	Feb, July ** or Nov**	1 year	NZ\$32,730	NZ\$4,100
Security Studies	Feb, July** or Nov**	1 year	NZ\$26,490	NZ\$3,320
Social Anthropology	Feb, July** or Nov**	1 year	NZ\$26,490	NZ\$3,320

\*\* Due to course sequencing, it may not be possible to complete within the minimum time-frame. One further semester will be required.

Fees and qualifications available are correct for 2023 and may be subject to change for 2024.

ONLINE QUALIFICATION	START DATE	DURATION (IF STUDIED FULL-TIME)	ONLINE COST	PER 15 CREDIT COURSE
Sociology	Feb, July** or Nov**	1 year	NZ\$26,490	NZ\$3,320
Spanish	Feb, or July**	1 year	NZ\$26,490	NZ\$3,320
Statistics	Feb or July**	1 year	NZ\$26,490	NZ\$3,320
Without specialisation	Feb, July** or Nov**	1 year	NZ\$26,490 - 32,730	NZ\$3,320 - 4,100
<b>Graduate Diploma in Aviation</b>				
Aviation Studies	Feb** or July**	1.5 years	NZ\$29,470	NZ\$3,690
<b>Graduate Diploma in Business Studies</b>				
Accounting	Feb or July	2 years	NZ\$29,470	NZ\$3,690
Human Resource Management	Feb or July**	1 year	NZ\$29,470	NZ\$3,690
Personal Financial Planning	Feb or July**	1 year	NZ\$29,470	NZ\$3,690
Without specialisation	Feb or July**	1 year	NZ\$29,470	NZ\$3,690
Graduate Diploma in Emergency Management	Feb, July** or Nov**	1 year	NZ\$29,470	NZ\$3,690
Graduate Diploma in Facilities Management	Feb or July	1 year	NZ\$29,470	NZ\$3,690
Graduate Diploma in Information Sciences	Feb or July	1 year	NZ\$31,740	NZ\$39,700
Graduate Diploma in Logistics and Supply Chain Management	Feb	1 year	NZ\$29,470	NZ\$3,690
Graduate Diploma in Science and Technology	Feb or July	1 year	NZ\$32,730	NZ\$4,100

\*\* Due to course sequencing, it may not be possible to complete within the minimum time-frame. One further semester will be required.

## POSTGRADUATE CERTIFICATES AND DIPLOMAS

Each 15 credit course requires approximately 10-12.5 hours each week of class and study time.

ONLINE QUALIFICATION	START DATE	DURATION (IF STUDIED FULL-TIME)	ONLINE COST	PER 15 CREDIT COURSE
Postgraduate Certificate in Applied Linguistics	Feb	1 semester	NZ\$17,290	NZ\$4,330
Postgraduate Certificate in Arts	Feb or July	1 semester	NZ\$17,290	NZ\$4,330
<b>Postgraduate Certificate in Business</b>				
Without specialisation	Feb or July	1 semester	NZ\$15,420	NZ\$3,860
Postgraduate Certificate in Emergency Management	Feb or July**	1 semester	NZ\$18,050	NZ\$4,520
Postgraduate Certificate in International Development	Feb or July	1 semester	NZ\$15,050	NZ\$3,770
Postgraduate Certificate in Planning	Feb or July	1 semester	NZ\$19,420	NZ\$4,860
Postgraduate Certificate in Science and Technology	Feb or July	1 semester	NZ\$19,810	NZ\$4,960
Postgraduate Diploma in Applied Linguistics	Feb	1 year	NZ\$30,060	NZ\$3,760
<b>Postgraduate Diploma in Arts</b>				
Defence and Security Studies	Feb or July**	1 year	NZ\$30,060	NZ\$3,760
Economics	Feb or July**	1 year	NZ\$30,830	NZ\$3,860
Education	Feb	1 year	NZ\$30,060	NZ\$3,760
English	Feb or July	1 year	NZ\$30,060	NZ\$3,760
Geography	Feb or July	1 year	NZ\$36,050	NZ\$4,510
Geospatial Science	Feb	1 year	NZ\$30,060	NZ\$3,760
History	Feb	1 year	NZ\$30,060	NZ\$3,760
Māori Knowledge	Feb	1 year	NZ\$30,060	NZ\$3,760
Media Studies	Feb or July	1 year	NZ\$30,060	NZ\$3,760
Politics and International Relations	Feb or July**	1 year	NZ\$30,060	NZ\$3,760

ONLINE QUALIFICATION	START DATE	DURATION (IF STUDIED FULL-TIME)	ONLINE COST	PER 15 CREDIT COURSE
Social Anthropology	Feb or July **	1 year	NZ\$30,060	NZ\$3,760
Sociology	Feb or July **	1 year	NZ\$30,060	NZ\$3,760
Postgraduate Diploma in Business	Feb or July	1 year	NZ\$30,830	NZ\$3,860
Postgraduate Diploma in Construction				
Construction Law	Feb or July	1 year	NZ\$38,840	NZ\$4,860
Construction Project Management	Feb or July	1 year	NZ\$38,840	NZ\$4,860
Digital Built Environment	Feb or July	1 year	NZ\$38,840	NZ\$4,860
Quantity Surveying <sup>4</sup>	Feb or July	1 year	NZ\$38,840	NZ\$4,860
Sustainable Built Environment	Feb or July	1 year	NZ\$38,840	NZ\$4,860
Without specialisation	Feb or July	1 year	NZ\$38,840	NZ\$4,860
Postgraduate Diploma in Counselling and Guidance	Feb	1 year	NZ\$30,060	NZ\$3,760
Postgraduate Diploma in Education				
Digital Education	Feb or July **	1 year	NZ\$30,060	NZ\$3,760
Early Years	Feb or July **	1 year	NZ\$30,060	NZ\$3,760
Inclusive Education	Feb or July **	1 year	NZ\$36,050	NZ\$4,510
Literacy Education	Feb or July **	1 year	NZ\$30,060	NZ\$3,760
Māori Education	Feb or July **	1 year	NZ\$30,060	NZ\$3,760
Mathematics Education	Feb or July **	1 year	NZ\$30,060	NZ\$3,760
Without specialisation	Feb or July **	1 year	NZ\$30,060	NZ\$3,760
Postgraduate Diploma in Environmental Management	Feb or July	1 year	NZ\$39,610	NZ\$4,960
Postgraduate Diploma in Emergency Management	Feb or July	1 year	NZ\$36,050	NZ\$4,510
Postgraduate Diploma in Health Service Management	Feb or July **	1 year	NZ\$30,830	NZ\$3,860
Postgraduate Diploma in International Development	Feb or July	1 year	NZ\$30,060	NZ\$3,760
Postgraduate Diploma in International Security				
Counter-Terrorism	Feb or July	1 year	NZ\$30,060	NZ\$3,760
Defence and Security Studies	Feb or July	1 year	NZ\$30,060	NZ\$3,760
Intelligence	Feb or July	1 year	NZ\$30,060	NZ\$3,760
Without specialisation	Feb or July	1 year	NZ\$30,060	NZ\$3,760
Postgraduate Diploma in Journalism	Feb or July	1 year	NZ\$30,060	NZ\$3,760
Postgraduate Diploma in Planning	Feb or July	1 year	NZ\$38,840	NZ\$4,860
Postgraduate Diploma in Science				
Agricultural Science	Feb or July**	1 year	NZ\$36,050	NZ\$4,530
Animal Science	Feb or July	1 year	NZ\$36,050	NZ\$4,510
Biological Sciences	Feb or July	1 year	NZ\$36,050	NZ\$4,510
Conservation Biology	Feb	1 year	NZ\$36,050	NZ\$4,510
Earth Science	Feb or July	1 year	NZ\$36,050	NZ\$4,510
Without specialisation	Feb or July	1 year	NZ\$36,050	NZ\$4,510

\*\* Due to course sequencing, it may not be possible to complete within the minimum time-frame. One further semester will be required.

<sup>4</sup> This qualification is accredited by RICS



## HONOURS DEGREES

### ONLINE QUALIFICATION

ONLINE QUALIFICATION	START DATE	DURATION (IF STUDIED FULL-TIME)	ONLINE COST	PER 15 CREDIT COURSE
<b>Bachelor of Arts (Hons)</b>				
Politics and International Relations	Feb or July **	1 year	NZ\$30,060	NZ\$3,760
<b>Bachelor of Construction (Hons)</b>				
Construction Management	Feb	1 year	NZ\$38,840	NZ\$4,860
Quantity Surveying <sup>4</sup>	Feb	1 year	NZ\$38,840	NZ\$4,860

\*\* Due to course sequencing, it may not be possible to complete within the minimum time-frame. One further semester will be required.

## MASTER'S DEGREES

A coursework masters (C) is generally a 180 credit qualification completed in either 1 year (three consecutive semesters) or 1.5 years. A research masters (R) is generally a 240 credit qualification (2 years), however some are 180 credit qualifications (1.5 years). Each 15 credit course requires approximately 10-12.5 hours each week of class and study time.

ONLINE QUALIFICATION	START DATE	DURATION (IF STUDIED FULL-TIME)	ONLINE COST	PER 15 CREDIT COURSE
<b>Master of Analytics</b>				
Business	Feb	1.5 years	NZ\$30,830	NZ\$3,860
Health	Feb**	2 years	NZ\$30,830	NZ\$3,860
<b>Master of Applied Linguistics (C)</b>				
Teaching English to Speakers of Other Languages	Feb	1.5 years	NZ\$30,060	NZ\$3,760
Without specialisation	Feb	1.5 years	NZ\$30,060	NZ\$3,760
<b>Master of Arts</b>				
Defence and Security Studies	Feb or July **	1.5 years	NZ\$30,060	NZ\$3,760
Economics	Feb or July **	1.5 years	NZ\$30,830	NZ\$3,860
Education	Feb or July **	1.5 years	NZ\$30,060	NZ\$3,760
English	Feb or July	1.5 years	NZ\$30,060	NZ\$3,760
Geography	Feb or July **	1.5 years	NZ\$36,050	NZ\$4,510
History	Feb or July **	1.5 years	NZ\$30,060	NZ\$3,760
Media Studies	Feb or July **	1.5 years	NZ\$30,670	NZ\$3,840
Philosophy	Feb or July **	1.5 years	NZ\$30,060	NZ\$3,760
Politics and International Relations	Feb or July **	1.5 years	NZ\$30,060	NZ\$3,760
Social Anthropology	Feb or July	1.5 years	NZ\$30,060	NZ\$3,760
Sociology	Feb or July **	1.5 years	NZ\$30,060	NZ\$3,760
<b>Master of Aviation (C)</b>	Feb or July	1.5 years	NZ\$30,830	NZ\$3,860
<b>Master of Business Administration</b>				
Digital Transformation	Mar, July or Nov	2 years part-time	NZ\$49,430	NZ\$6,180
Global Business	Mar, July or Nov	2 years part-time	NZ\$32,950	NZ\$4,120
Without specialisation	Mar, July or Nov	2 years part-time	NZ\$49,430	NZ\$6,180
<b>Master of Business Studies (R)</b>				
Accountancy	Feb or July	1.5 years	NZ\$30,830	NZ\$3,860
Communication	Feb or July**	1.5 years	NZ\$30,830	NZ\$3,860
Economics	Feb or July	1.5 years	NZ\$30,830	NZ\$3,860
Finance	Feb or July	1.5 years	NZ\$30,830	NZ\$3,860

ONLINE QUALIFICATION	START DATE	DURATION (IF STUDIED FULL-TIME)	ONLINE COST	PER 15 CREDIT COURSE
Human Resource Management	Feb or July**	1.5 years	NZ\$30,830	NZ\$3,860
Management	Feb or July**	1.5 years	NZ\$30,830	NZ\$3,860
Marketing	Feb or July**	1.5 years	NZ\$30,830	NZ\$3,860
<b>Master of Construction</b>				
Construction Law	Feb	1.5 years	NZ\$38,840	NZ\$4,860
Construction Project Management	Feb	1.5 years	NZ\$38,840	NZ\$4,860
Digital Built Environment	Feb	1.5 years	NZ\$38,840	NZ\$4,860
Quantity Surveying <sup>4</sup>	Feb	1.5 years	NZ\$38,840	NZ\$4,860
Sustainable Built Environment	Feb	1.5 years	NZ\$38,840	NZ\$4,860
Without specialisation		1.5 years	NZ\$38,840	NZ\$4,860
Master of Creative Writing	Feb	1.5 years	NZ\$35,670	NZ\$4,460
<b>Master of Education (C or R)</b>				
		(C) 1.5 years; (R) 2 years		
Digital Education	Feb or July **	1.5 - 2 years	NZ\$30,060	NZ\$3,760
Early Years	Feb or July *	1.5 - 2 years	NZ\$30,060	NZ\$3,760
Inclusive Education	Feb or July **	1.5 - 2 years	NZ\$30,060	NZ\$3,760
Literacy Education	Feb or July **	1.5 - 2 years	NZ\$30,060	NZ\$3,760
Māori Education	Feb or July **	1.5 - 2 years	NZ\$30,060	NZ\$3,760
Mathematics Education	Feb or July **	1.5 - 2 years	NZ\$30,060	NZ\$3,760
Without specialisation	Feb or July **	1.5 - 2 years	NZ\$30,060	NZ\$3,760
Master of Emergency Management	Feb	1.5 years	NZ\$35,270	NZ\$4,410
Master of Environmental Management	Feb or July	1.5 years	NZ\$39,610	NZ\$4,960
<b>Master of Finance</b>				
Financial Analytics and Research	Feb or July	1.5 years	NZ\$30,830	NZ\$3,860
Risk Analytics	Feb or July	1.5 years	NZ\$30,830	NZ\$3,860
Master of Health Service Management	Feb or July**	1.5 years	NZ\$30,670	NZ\$3,840
Master of International Development	Feb or July	1.5 years	NZ\$30,060	NZ\$3,760
<b>Master of International Security (C)</b>				
Counter-Terrorism	Feb, July ** or Nov **	1.5 years	NZ\$30,060	NZ\$3,760
Defence and Security Studies	Feb, July ** or Nov **	1.5 years	NZ\$30,060	NZ\$3,760
Intelligence	Feb, July ** or Nov **	1.5 years	NZ\$30,060	NZ\$3,760
Without specialisation	Feb, July ** or Nov **	1.5 years	NZ\$30,060	NZ\$3,760
<b>Master of Management</b>				
Communication	Feb or July **	1.5 years	NZ\$30,830	NZ\$3,860
Financial Economics	Feb or July	1.5 years	NZ\$30,830	NZ\$3,860
Human Resource Management	Feb or July **	1.5 years	NZ\$30,830	NZ\$3,860
Journalism	Feb or July	1.5 years	NZ\$30,830	NZ\$3,860
Management	Feb or July **	1.5 years	NZ\$30,830	NZ\$3,860
Marketing	Feb** or July**	2 years	NZ\$30,830	NZ\$3,860
Sustainability	Feb** or July**	2 years	NZ\$30,830	NZ\$3,860
Master of Professional Accountancy (Chartered Accountant)	July	1.5 years	NZ\$32,760	NZ\$4,100
Master of Professional Accountancy (C)	Feb or July		NZ\$32,760	NZ\$4,100

ONLINE QUALIFICATION	START DATE	DURATION (IF STUDIED FULL-TIME)	ONLINE COST	PER 15 CREDIT COURSE
<b>Master of Science (R)</b>				
Biological Sciences	Feb or July	1.5 years	NZ\$30,830	NZ\$3,860
Conservation Biology	Feb	1.5 years	NZ\$30,830	NZ\$3,860
Earth Science	Feb or July	1.5 years	NZ\$30,830	NZ\$3,860
Ecology	Feb	1.5 years	NZ\$30,830	NZ\$3,860
Mathematics <sup>5</sup>	Feb or July	1.5 years	NZ\$30,830	NZ\$3,860
Statistics <sup>5</sup>	Feb or July	1 year	NZ\$30,830	NZ\$3,860
<b>Master of Speech and Language Therapy (R)</b>	Feb	2 years	NZ\$38,840	NZ\$4,860
<b>Master of Sustainable Development Goals</b>				
Business and Sustainability	Feb or July	1.5 years	NZ\$30,830	NZ\$3,860
Disaster Management	Feb or July **	1.5 years	NZ\$30,060	NZ\$3,760
Economics for Sustainability	Feb or July	1.5 years	NZ\$30,060	NZ\$3,760
Environmental Sustainability	Feb or July **	1.5 years	NZ\$36,060	NZ\$3,760
Global Development	Feb or July **	1.5 years	NZ\$30,060	NZ\$3,760
Peace and Security	Feb or July **	1.5 years	NZ\$30,060	NZ\$3,760
<b>Master of Veterinary Medicine</b>				
Companion Animal	Feb or July	1 year	NZ\$63,170	NZ\$7,900
Without specialisation	Feb or July	1 year	NZ\$63,170	NZ\$7,900

(C) Coursework (R) Research

\*\* Due to course sequencing, it may not be possible to complete within the minimum time-frame. One further semester will be required.

<sup>3</sup> Wellington offerings are mainly limited to Communication

<sup>4</sup> This qualification is accredited by RICS

<sup>5</sup> The Mathematics and Statistics subjects are only available for study by 120 credit Thesis, and for students with suitable prior postgraduate study.

<sup>6</sup> The NZ Government has approved a policy for new international student PhD applicants which offers international students the same level of tuition fees as those paid by New Zealand domestic students. At Massey University, this policy relates to the Doctor of Philosophy with research topics in all areas. See [www.massey.ac.nz/prospective-phd/](http://www.massey.ac.nz/prospective-phd/)





# Entry requirements for international students

Undergraduate academic entrance requirements for most undergraduate qualifications, the minimum academic entry requirement is successful completion of a qualification equivalent to the New Zealand Year 13 – NCEA Level 3 University Entrance. International students need to check the equivalency of their secondary school qualification by reviewing the list of Academic Admission requirements by Country:

- International students who have previously studied at a New Zealand secondary school should refer to the secondary school requirements section.
- International students who have completed a minimum of 4 x B's at level 5 or 6 in the New Zealand Diploma in Business may apply for entry into a Bachelor's qualification.

The English language requirements can be met by:

- A minimum IELTS 5.5 (or equivalent) used to gain entry to the NZDipBus or,
- A recent IELTS 6.0 with no band score less than 5.5

## GRADUATE DIPLOMAS

Admission to a Graduate Diploma requires successful completion of a three year diploma or undergraduate degree from a recognised tertiary institution.

## UNDERGRADUATE ENGLISH LANGUAGE ENTRANCE REQUIREMENTS

Students from a country where English is not the first language must obtain a minimum English Language competency level. Some qualifications require a higher level of English Language competency than the minimum requirement indicated. See the table below for a full list of requirements, and also online here.

Massey University recognises the following English Language examinations, among others:

### International English Language Testing System (IELTS)

Only Academic IELTS scores are acceptable. A scanned copy of your academic IELTS scores is acceptable as Massey is able to verify your results online.

### Test of English as a Foreign Language (TOEFL)

A scanned copy of your TOEFL scores is acceptable (this applies to iBT test results only).

# ENGLISH LANGUAGE ENTRANCE REQUIREMENTS

ENGLISH EVIDENCE	ENGLISH FOR ACADEMIC PURPOSES 1 (EAP1)	FOUNDATION CERTIFICATE (INTERNATIONAL)	ENGLISH FOR ACADEMIC PURPOSES 2 (EAP2)	FOUNDATION CERTIFICATE (INTERNATIONAL - ACCELERATED)	UNDERGRADUATE	POSTGRADUATE
Academic IELTS	5.0 overall and minimum 4.5 in each band	5.5 overall and minimum 5.0 in each band	5.5 overall and minimum 5.0 in each band	6.0 overall and minimum 5.5 in each band	6.0 overall and minimum 5.5 in each band	6.5 overall and minimum 6.0 in each band
TOEFL iBT	40 overall (3 in reading & listening, 13 in speaking & writing)	50 overall (5 in reading & listening, 15 in speaking & writing)	50 overall (5 in reading & listening, 15 in speaking & writing)	65 overall (10 in reading & listening, 17 in speaking & writing)	Overall score 80, minimum 19 in Writing	Overall score 90, minimum 20 in Writing
Cambridge English Qualification	155	165	165	170	B2 First, or B2 First for schools, or C1 Advanced, or C2 Proficiency with a score of 169. No less than 162 in each skill.	C1 Advanced or C2 Proficiency with a score of 176. No less than 169 in each skill.
English for Academic Purposes (Massey University College)	N/A	Completion of EAP1 with 60%	Completion of EAP1 with 60%	Completion of EAP2 with 65%	Completion of EAP2 with 65%	Completion of EAP2 with 75%
NZ Certificate in English Language	Level 3 (General)	Level 3 (Applied)	Level 3 (Applied)	Level 4 (Academic)	Level 4 (Academic)	Level 5
Pearson Test of English (PTE)	38 overall	46 overall	46 overall	50 overall	50 overall and minimum 42 in each communicative skill	58 overall and minimum 50 in each communicative skill
LanguageCert	B1 Achiever IESOL (LRWS) with PASS and no less than Pass in each skill	B2 Communicator IESOL (LRWS) with PASS and no less than Pass in each skill	B2 Communicator IESOL (LRWS) with PASS and no less than Pass in each skill	C1 Expert IESOL (LRWS) with PASS and no less than Pass in each skill	C1 Expert IESOL (LRWS) with PASS and no less than Pass in each skill	C1 Expert IESOL (LRWS) with HIGH PASS and no less than Pass in each skill or C2 Mastery IESOL (LRWS) with PASS and no less than Pass in each skill

## POSTGRADUATE ACADEMIC ENTRANCE REQUIREMENTS

### MASTERS, POSTGRADUATE DIPLOMAS AND POSTGRADUATE CERTIFICATES

An appropriate undergraduate degree from a recognised tertiary institution is required

### DOCTORATE DEGREES (PHD)

The equivalent or better of a relevant Bachelor's (Hons) or Master's Degree with First or Second Class Honours, Division 1 (B+ and above) with prior experience of independent research at postgraduate level.

QUALIFICATION LEVEL	IELTS	TOEFL iBT	PTE ACADEMIC	CAMBRIDGE ENGLISH
Postgraduate Level	6.5 (no band less than 6.0)	90 overall (min 20 in Writing)	58 Overall (min 50 in communicative skills)	176 overall and all bands 169 or better
DAAD (German students only)	A minimum B grade in each section plus a letter of support from University			

Some colleges may specify a higher level of attainment for PhD applicants.

### INTERNATIONAL ARTICULATION PATHWAYS

Massey University has a large number of international partner articulation pathways into our qualifications, so you may be able to progress directly from your university into Massey University.

We have qualifications in

China, India, Indonesia, Malaysia, Singapore, Sri Lanka, the United Kingdom and Vietnam.

### SCHOLARSHIPS

- Massey University International Student Excellence Scholarships
- Manaaki New Zealand Scholarships (for undergraduate or postgraduate study)
- New Zealand Commonwealth Scholarship and Fellowship Plan (for postgraduate study)
- Massey University Doctoral Scholarships (for PhD study)
- Higher Education Commission, Pakistan (for PhD study)
- Chinese Scholarship Council (for PhD study)

### TO APPLY VISIT

[massey.ac.nz/scholarships](https://massey.ac.nz/scholarships)

# ACADEMIC ENTRY REQUIREMENTS BY COUNTRY/ REGION

	FOUNDATION ENTRY REQUIREMENTS	UNDERGRADUATE ENTRY REQUIREMENTS
Worldwide	<p>Completion of GCSE Ordinary (O) Levels with 2C and 2D grade in 4 academic subjects; or</p> <p>Completion of Year 1 of the International Baccalaureate (IB) with 16 points across 4 subjects; or</p> <p>Completion of a Foundation Program from a recognised institution (must follow completion of an accepted Year 12 (or equivalent) program) with Pass grade; or</p> <p>Completion of the General Education Diploma (GED) (min 145 in 4 subject)</p>	<p>International Baccalaureate (IB) with successful completion of a minimum 24 points.</p> <p>Cambridge International Examination or Advanced International Certificate of Education (CIE /AICE) A or AS levels, a minimum of 120 points from approved syllabus group list. And a minimum D grade or better in syllabuses from at least three different in each of at least 3 different syllabus groups (excluding Thinking Skills), as well as an E or better in AS English and a D grade in IGCSE or GCSE Mathematics.</p> <p>Taken in countries other than New Zealand (excluding United Kingdom): 3 A-levels including at least 1 C grade or better. A result in General Studies cannot be included among the 3 on which the application is based.</p>
Australia	Completion of Year 11 (50% in relevant subjects)	Successful completion of Year 12 with a minimum tertiary entrance rank (TER), ATAR or equivalent of 74.
Bangladesh	Completion of Higher Secondary Certificate Year 12 with 70% average (A grade/4.0 GPA) across 4 academic subjects	2 years of a Bachelor's Degree..
Brazil	Certificado de Ensino Medio with 4 x B grade passes in academic subjects.	Successful completion of one year's tertiary study at a recognised institution.
Canada	Grade 12 Certificate.	<p>General: High School graduation (Grade 12 Certificate) with minimum achievement of 60% average across 6 subjects including English.</p> <p>Ontario: Secondary Diploma with a minimum average 65% in grade 12, higher levels of achievement will be required for limited entry courses (such as Aviation).</p> <p>First year of CEGEP with 60% across 6 subjects including English. Students with the full 2 years of CEGEP with 60% across 6 subjects including English can be considered for admission plus credit.</p>
China	<p>Senior High School Year 3 Certificate of Graduation, minimum 70%.</p> <p>Or, completion of Senior High School Year 2 exams with superior grade of 80% average.</p>	Senior High School graduation plus successful completion of one year bachelors level study from a recognised institution; or Successful completion of a two year Diploma, or a minimum of two years out of a three year Diploma from a recognised institution; or Completed Gaokao with a tier one score from the related province.
Chile	Licencia de Educacion Media with 4 x 6pt passes in academic subjects.	One year's successful bachelor degree level study at a recognised institution.
Colombia	Successful completion of High School Diploma with appropriate GPA.	Successful completion of one year's tertiary study at a recognised institution.
Denmark		Højere Forberedelseksamen (HF); or Højere Handelseksamen (HHX).
Fiji	Fiji School Leaving Certificate 65% in four academic subjects.	<p>Fiji Form 7 Certificate: aggregate over four subjects of 250 marks out of 400, with a minimum of 50 in English; or</p> <p>USP foundation year in either science or social sciences with a grade average of B and no grade lower than C in the eight required courses; or</p> <p>USP Certificate IV in Business Leadership and Management – a completed Certificate IV in Business Leadership and Management and an earlier qualification at Level 5 or above on the Fiji National Qualifications Framework.</p>
France	All applications considered on a case by case basis.	Successful completion of French Baccalaureate Diploma (Diplôme du Baccalauréat).
Germany	Mittlere Reife / Realschulabschluss.	Successful completion of Senior High School (Zeugnis der Allgemeinen Hochschulreife – Abitur).
Hong Kong	HK Certificate of Education, minimum two x C and two x D grades or equivalent, or HKDSE: 10 points over the best five subjects taken from Category A and C subjects.	<p>Three Hong Kong Advanced Level passes with one at grade C or higher in academic subjects; or</p> <p>Hong Kong Diploma of Secondary Education: Score of 15, based on aggregate of the applicant's best five subjects (i.e. five subjects at an average Level 3 in each subject) from any combination of Core and Category A and C electives but excluding Category B (Applied Learning) subjects.</p>
India	All India Senior Secondary Higher Secondary School Certificate (HSC) (Year 12), minimum 65% over four academic subjects OR All India Senior Secondary Higher Secondary School Certificate (HSC) (Year 12), minimum 75% over 3 academic subjects.	All India Senior School Certificate (AISSC) or Indian School Certificate (ISC) Year 12 with an overall average of 75% and a minimum of 60% in English.
Indonesia	Sekolah Menengah Atas (SMA) with a minimum GPA of 7.0.	Successful completion of one year's tertiary study at a recognised institution; or A minimum of 8.5 of Sekolah Menengah Atas (SMA).
Iran	Successful completion of 3 year High School Diploma with an average of 12 or above.	One year's successful bachelor degree level study at a recognised institution OR High School Diploma and a pre-university Certificate with a GPA of 14/20 or above OR Kardani Associate Degree with a minimum GPA of 14



	FOUNDATION ENTRY REQUIREMENTS	UNDERGRADUATE ENTRY REQUIREMENTS
Japan	Upper Secondary School Leaving Certificate (Kotogakko Sotsugyo Shomeisho) with a C average.	Applicants must meet 1 of the following requirements: (a) completion of a High School Diploma with a B average; or (b) 1 year of successful study at a Japanese university; or (c) completion of a junior college diploma of 2 or 3 years' duration.
Kuwait		Successful completion of General Secondary Education Certificate (GSEC) with an overall average of 80% over approved academic subjects.
Latin America	Successful completion of High School Diploma with appropriate GPA.	Successful completion of one year's tertiary study at a recognised institution.
Malaysia	SPM: Grade 4 average in five subjects, or, UEC: Grade 6 average over five subjects.	STPM 3 principal passes, or, UEC with a maximum of 20 points over best five subjects, or GCE A levels with at least 3 results with 1 grade at Level C or above, or, SAM (or equivalent) with a minimum tertiary entrance rank of 74.
Mexico	All applications considered on a case by case basis.	One year's successful bachelor degree level study at a recognised institution of university standing with good passing grades.
New Zealand	National Certificate in Educational Achievement, Level 2 awarded	National Certificate in Educational Achievement, University Entrance.
Oman	General Secondary School Leaving Certificate with 70% average in best five subjects (excluding Arabic/ Islamic Education) and 70% in math.	Successful completion of a two year diploma at an internationally recognised tertiary institution.
Pakistan	Intermediate Higher Secondary Certificate with 60% average (B grade or Division 1).	Successful completion of one year's study at an internationally recognised tertiary institution.
Papua New Guinea	Higher School Certificate with Grade B in five academic subjects.	Successful completion of one year study at an internationally recognised tertiary institution. Successful completion of the South Pacific Form 7 Certificate (with three or more B grades in academic subjects).
Philippines	Secondary School with Superior Grades (grade B) in Year 4.	Successful completion of one year study at an internationally recognised tertiary institution.
Russia	Certificate of Secondary Education with a Grade 4 average.	Successful completion of one year study at an internationally recognised tertiary institution.
Saudi Arabia	General Secondary Education Certificate with a Very Good grade (75%) over four best academic subjects.	Successful completion of either an undergraduate diploma or an associate degree at a recognised tertiary institution.
Singapore	GCE O-level Grade B4 over four subjects.	A minimum of three H2 passes at C grade; or Successful completion of NUS High School Diploma.
Solomon Islands	Completion of Secondary School with a B average.	USP foundation year in either science or social science with a grade average of B or higher and no grade lower than C in the eight required courses.
South Africa	National Senior Certificate with 2 x Achievement levels 6 (70-79%) and 2 x Achievement levels 5 (60-69%).	Successful completion of the South African National Senior Certificate that enables entry to university.
South Korea	High school diploma with a C average.	Korean University Entrance examination, minimum of 250 for general degrees, higher scores may be needed for specialist qualifications.
South Pacific countries	Completion of South Pacific Form 7 Certificate.	South Pacific Form 7 Certificate: 3 or more B grades in academic subjects with a minimum of Grade 5 in PSSC English and Grade 6 in PSSC maths OR Successful completion of USP Foundation Year.
Sri Lanka	GCE O-levels with credit grade in four subjects.	GCE A-levels with a minimum of three credit passes.
Taiwan	Completion of Senior High School Year 2 exams with an 80% average Or, Senior High School Year 3 with a C average (70%).	Applicants must have satisfactorily completed (a) 1 year of university or (b) senior high school and a 2-year junior college diploma or (c) junior high school and a 5-year junior college diploma. GSAT 3 x High level and 1 x standard bench marks (if seeking entry into a science based qualification, must have a high level in science).
Thailand	Matayom 6 with grade average of 2.5.	Successful completion of one year of tertiary study at an internationally recognised tertiary institution or Matayom 6 with a GPA of 3.2.
Tonga	Successful completion of Form 7.	Successful completion of the USP Foundation Programme OR South Pacific Form Seven Certificate: 3 or more B grades in academic subjects with a minimum of grade 5 in PSSC English and grade 6 in PSSC maths (grade 1 is highest) OR Tonga National Form Seven Certificate: 3 or more B grades in academic subjects.
UK	GCSE with two x B and two x C grades.	A and AS Levels GCSE (considered on a case-by-case basis).
United Arab Emirates	General Secondary School Education Certificate with a Very Good grade (75%) over 4 best academic subjects.	One year's successful bachelor degree level study at a recognised institution of university standing with good passing grades.
USA	High School Diploma.	Successful completion of High School Diploma from an accredited high school, plus a minimum ACT composite score of 24 or a minimum SAT result of 1100 out of 1600 (new SAT scores) or 1650 out of 2400 (old SAT scores) (Aggregate of Evidence-Based Reading and Writing, and Mathematic scores in SAT Reasoning Tests taken from March 2016, or the Critical Reading and Mathematics scores in SAT Reasoning Tests taken prior to March 2016.
Vietnam	Upper Senior Secondary Graduation Diploma/ Bang Tot Ngiep Trung hoc Pho thong with grade of 6 out of 10.	Completion of Bang Tot Ngiep Trung hoc Pho thong (Vietnam Upper Senior Secondary Graduation Diploma) with 8 out of 10 in their Secondary School Leaving Examination, (SSLE), (Thi Tot Nghiep Pho thong Trung hoc). OR Successful completion of one year's study at a recognised tertiary institution.

# Contact Massey for more information

## MASSEY.AC.NZ

Our website is full of useful information covering everything you need to know – from what each campus has to offer, their departments and qualifications, scholarships, events, accommodation and plenty more.

## INTERNATIONAL STUDENTS

The International Recruitment team is the first point of contact for prospective students. If you are considering studying at Massey we welcome your enquiry, and look forward to helping you join us. For more information:

Phone: **+64 6 350 5701**

Email: **international@massey.ac.nz**

Web: **massey.ac.nz/international**

## STUDENT ADVISERS

We have lots of people available to answer any questions you may have about studying with us. We understand it's a big decision. To speak to someone, or to get someone to visit your school or workplace:

Phone: **0800 627 739**

Text: **5222**

Email: **academicadvice@massey.ac.nz**

Dedicated international, Māori and Pacific student advisers are also available.

## SOCIAL MEDIA



**FACEBOOK**

**Facebook.com/masseyuniversity**



**INSTAGRAM**

**@MasseyUni**



**YOUTUBE**

**youtube.com/masseyuniversity**

## WECHAT

**MasseyUniversityNZ**

