

**EDITH COWAN UNIVERSITY  
PERTH, WESTERN AUSTRALIA** —



# **2023** **STUDY ABROAD** **STUDENT GUIDE**

**FOR STUDENTS WHO WANT TO  
EXPERIENCE AUSTRALIA**



**THE WORLD  
IS WAITING.**

**BECOME  
WORLD READY  
AT ECU.**

# CONTENTS

Study Abroad at ECU	3
Why ECU is a Great Choice for International Students	4
What You Should Know About Study Abroad at ECU	6
Social Life at ECU	7
5 Best Things to do Around Perth	8
5 Ways to See WA	9
ECU Campuses	10
Our Study Areas	11
Undergraduate Options	12
Postgraduate Options	20
How to Apply	22
Facilities, Services & Support	23
Equity, Diversity & Disability	23
Student Accommodation	24
Frequently Asked Questions	26



ECU is committed to reconciliation and recognises and respects the significance of Aboriginal and Torres Strait Islander peoples' communities, cultures and histories. ECU acknowledges and respects the Noongar people as the traditional custodians of the land on which our campuses are located. [www.ecu.edu.au/about-ecu/indigenous-matters](http://www.ecu.edu.au/about-ecu/indigenous-matters)

# STUDY ABROAD AT ECU — BE WORLD READY.

A Study Abroad program is the perfect way to expand your global citizenship. Live, work, and study in Australia, immerse yourself in the culture, and develop a deeper understanding of how you can contribute to the world.

From the time you enquire to the time you enrol, our expert staff will guide you. We can help you select your units, submit an application, accept your place and explore what ECU has to offer so you can make good use of your time abroad.

We love to hear from future Study Abroad students. Reach out today, and we can help you create an unforgettable experience!



**"FROM MY FIRST DAY IN PERTH, EVERYONE I HAVE MET HAS GREETED ME WITH OPEN ARMS."**

Going out for weekly feeds or playing footy on the beach, Perth provides a new aspect to discover around every corner, with a range of activities that would satisfy any checklist. I can easily say Perth is an easy-going city filled with spontaneous people always ready for an adventure!

My time at ECU has been nothing but enjoyable! From the late-night movies at Joondalup Pines to the delicious lunch breaks at Café 6. While at ECU, I have found it provides an outlet for any student through its endless number of clubs. Personally, I have the opportunity of being the lead student for the ECU Tennis Club, which has opened the door to meeting so many outstanding students and making meaningful connections.

Coming from the northern hemisphere, the best advice I can give to any new students coming to Perth is to know it's hot during December and cold during July. Also, to explore all the many eateries Perth has to offer.

You will make amazing friends, and be provided with opportunities to enhance your future that will leave you with meaningful memories.

Cheers!

**RILEY GULLINO**

Studied international business with the School of Business and Law  
**USA**

# WHY ECU IS A GREAT CHOICE FOR INTERNATIONAL STUDENTS

When you study at ECU, you'll get a 5 star education. That includes how you are taught, how you develop skills for the future and how you are supported throughout your course. You'll also leave ECU with memories of a great overall experience.

## HIGHEST QUALITY TEACHING

We're one of Australia's best universities for teaching. For an amazing 15 straight years, our graduates have rated the quality of our teaching 5 stars in the *Good Universities Guide*.

Only three other universities in the country can match this.



## LEGENDARY STUDENT SUPPORT

Studying in another country can be challenging for many people. But at ECU, we help you overcome any academic or personal challenges through our many support services.

We're one of the best universities in Australia for student support – we even have a Student Success team!



## MOVING UP IN THE WORLD RANKINGS



ECU has maintained its position in the top 500 in the Times Higher Education World University Rankings for 2022. This ranking places us in the top 2.5% of universities in the world.

We're also in the Times Higher Education world's top 100 young universities under 50 years old. This rates us highly on aspects like teaching, research, citations, international outlook and industry income.

Not only does ECU offer an unrivalled student experience, but it is also situated in beautiful, modern and vibrant Perth, offering an outstanding lifestyle to complement your studies. Discover what Perth has to offer on pages 8-9.

# WHAT OUR STUDENTS SAY

Students come from all over the world to study with ECU and each have their own unique experience. Hear from past students like Marius, Caroline, Edith and Marcela.

You can also chat to some of our current International Student Ambassadors to hear their experience first hand [www.ecu.edu.au/degrees/international/ask-a-student](http://www.ecu.edu.au/degrees/international/ask-a-student)



## MARIUS PISCHKE

Studied environmental and process engineering with the School of Engineering

**Germany**

"Facilities like the Student Hub helped me a lot in the beginning as it was really well organised and helpful. The campus is great too – I would say ECU has a very well-developed studying environment."



## MARCELA MONTEZANO

Studied exercise physiology with the School of Medical and Health Sciences

**Brazil**

"The Study Abroad program provided a great update in my practical knowledge, such as learning to handle new equipment with new technologies and new assessment methods available for my work area. In addition, the program helped me to increase my network and enabled better job opportunities in my field."



## MENGDIE (EDITH) GUO

Studied accounting and finance with the School of Business and Law

**China**

"In this program, you get the same opportunities as other students to enjoy ECU and to engage in class activity. I will keep pursuing my career after my Study Abroad program and I do believe this amazing experience will help my career development."



## CAROLINE SCHLESINGER

Studied in the School of Arts and Humanities, and the School of Business and Law

**Denmark**

"The facilities at the Mount Lawley and Joondalup campuses were new and modern. And most of my tutors had worked in the communications and marketing industry, which made the units interesting, relevant and inspiring."

# WHAT YOU SHOULD KNOW ABOUT STUDY ABROAD AT ECU

Study Abroad is a fantastic learning abroad experience. We want to make sure you create the best program, so we've outlined three key things you should know.

1

## STUDY ABROAD COURSE CODES

You can study for up to 2 semesters as a Study Abroad student. The courses are:

- X01 Study Abroad Undergraduate One Semester
- X17 Study Abroad Undergraduate Two Semesters
- X02 Study Abroad Postgraduate One Semester
- X18 Study Abroad Postgraduate Two Semesters

2

## SELECTING YOUR UNITS

You can choose units from all of our eight Schools to create a unique study program of 3-4 units per semester.

Here is how to select your units:

- Head to pages 12-21 of this guide to check out some popular units
- Search an ECU degree for units that match your interest (e.g. Bachelor of Laws)
- Head to the ECU Handbook and search by keyword to find a unit [www.ecu.edu.au/handbook](http://www.ecu.edu.au/handbook)
- Chat to an ECU Authorised Agent [www.ecu.edu.au/future-students/applying/find-an-authorised-agent](http://www.ecu.edu.au/future-students/applying/find-an-authorised-agent) or to ECU Staff [international.partnerships@ecu.edu.au](mailto:international.partnerships@ecu.edu.au)

3

## TUITION FEES

ECU has great value Study Abroad tuition fees. In 2023 they are split into Group A and Group B:

### FEE Group A

Includes hundreds of units from disciplines in arts, business, computing, design, economics, education, humanities, law, mathematics, science (non lab-based) and social science:

- 45 credit points (3 units): \$5,220 AUD
- 60 credit points (4 units): \$6,960 AUD

### FEE Group B

Includes a special selection of units in the disciplines of engineering, nursing, paramedicine and science (lab-based):

- 45 credit points (3 units): \$7,800 AUD
- 60 credit points (4 units): \$10,400 AUD

You can check the tuition fees using our Fees Calculator [apps.ecu.edu.au/fees-calculator](https://apps.ecu.edu.au/fees-calculator) for the latest information.

It's really simple to use. Select the year you plan to commence > International Onshore Student > Study Abroad > search the Study Abroad tuition fee for individual units.



# SOCIAL LIFE AT ECU

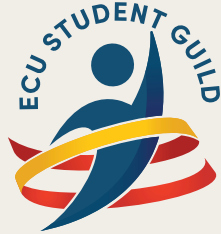


## ECU STUDENT GUILD

ECU Student Guild is run by ECU students and provides academic, social and financial assistance.

The Guild organises regular social events on campus and supports the many and varied student clubs at ECU. Joining a club is a great way to meet new people and enhance your university experience.

They also run a second-hand bookshop with an excellent range of used textbooks. Best of all, Guild membership is free for all students. Visit [www.ecuguild.org.au](http://www.ecuguild.org.au) for more details.



## ECU'S INTERNATIONAL CAFE

Being an international student is an exciting opportunity – you get to build new friendships and amazing international contacts. But it can also be a little overwhelming.

ECU invites international students to come along and share a coffee and afternoon tea, while learning about living and studying in Australia at International Café.

Each week hear from international students who have been in your shoes. Discover tips for balancing study and life, and other fun information such as the best hidden spots around Perth.

You will also hear from different guest speakers each week about services and activities available to you.

This is a great opportunity to meet other new international students from across the globe and get to know some of your fellow students a little bit better. All over a coffee and bite to eat!



# 5 BEST THINGS TO DO AROUND PERTH



1

## MOVIES

Go see a film at one of several open air cinemas, including one on ECU's Joondalup Campus!

2

## FESTIVALS

Get along to one of Perth's annual international arts festivals – Fringe World Festival and Perth Festival.

3

## SIGHTSEEING

Visit bustling Elizabeth Quay, enjoy a guided walk in Kings Park and explore the extensive cycle tracks around the Swan River.

4

## BEACHES

Explore the stunning beaches and best sunsets in Australia.

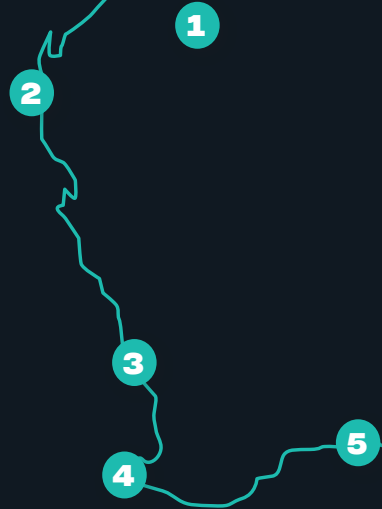
5

## ROTTNEST ISLAND

Take a ferry across to Rottne Island and take a quokka selfie.



# 5 WAYS TO SEE WA



1

## JOFFRE GORGE, KARIJINI NATIONAL PARK

Explore Karijini National Park and the Hamersley Range, with gorges, watercourses and mountains carved over millions of years.

2

## NINGALOO REEF, CORAL BAY

Swim in Ningaloo Reef, the world's largest fringing reef, home to 500 marine species like turtles, manta rays and the famous Whaleshark.

3

## THE PINNACLES, NAMBUNG NATIONAL PARK

Take a day trip to Cervantes and the Pinnacles to experience the seafood, sandboarding and ancient rock formations.

4

## MARGARET RIVER

Getaway to Margaret River and surrounds to explore the world-renowned cuisine, wineries, breweries, surf and accommodation.

5

## KANGAROOS AT LUCKY BAY, CAPE LE GRAND NATIONAL PARK

Discover the beaches of Denmark, Albany, Bremer Bay and Esperance, with endless opportunities to snorkel, dive, swim, surf and capture the wildlife.

# ECU CAMPUSES

**WE ARE LOCATED OVER THREE  
CAMPUSES IN BEAUTIFUL  
WESTERN AUSTRALIA.  
ALL OF OUR CAMPUSES CAN  
BE ACCESSED CONVENIENTLY VIA  
PUBLIC TRANSPORT.**

## JOONDALUP CAMPUS

ECU's spacious and modern main campus is in Joondalup, 25km north of Perth. Joondalup is a busy neighbourhood and home to Lakeside Joondalup Shopping Centre. The Joondalup Campus is connected to the train station and other key places by the free Central Area Transit (CAT) bus network.

25  
mins



ECU Joondalup Campus  
from Perth city by train

## MOUNT LAWLEY CAMPUS

ECU's boutique campus is located in the thriving cultural hub of Mount Lawley, 4.5km from the centre of Perth. The Mount Lawley Campus offers courses in creative arts, media, communications, design and performing arts, and offers an inspiring and buzzing artistic vibe.

15  
mins



ECU Mount Lawley Campus  
from Perth city by bus

## ECU SOUTH WEST CAMPUS

Located two hours' drive south of Perth, ECU South West in Bunbury is the largest university campus in regional Western Australia. The South West Campus offers courses in arts, commerce, science, health sciences, nursing and midwifery, social work and teacher education.

2  
hours



ECU South West Campus  
from Perth city by car



# OUR STUDY AREAS

At ECU, we group similar fields of work into eight diverse study areas that align with our teaching schools. All of our courses are industry-relevant and internationally-recognised and most are professionally-accredited.

## ARTS & HUMANITIES

We offer programs in arts, design, media, communications, psychology, criminology, and social change. Our flexible course structures allow students to access electives in many disciplines to encourage multi-skilling, and improve employment prospects.



## BUSINESS & LAW

Business and Law at ECU offers an exciting mix of courses and majors that combine the latest theory with practical experience, leading to a diverse choice of careers. Students can expect a practical experience and to learn essential employability skills to help them succeed in a variety of dynamic global business environments.

## ENGINEERING & TECHNOLOGY

ECU has been ranked in the top 175 universities in the world for Engineering by the Times Higher Education World University Rankings for 2022. Here, you'll study in some of the best-equipped, industry-grade engineering labs in Australia, with the opportunity to work on real-world projects and develop strong contacts through industry engagements, events and internships. With an ECU engineering degree, you'll graduate as a world-ready engineer, able to work globally and capable of meeting the challenges of the future.

## MEDICAL & HEALTH SCIENCES

Medical and Health Sciences offers exciting and diverse areas of study and some of ECU's world-leading research teams. Courses include biomedical science, health science, exercise and sports science, occupational therapy, paramedical science, speech pathology, nutrition and dietetics, and public health.

## NURSING & MIDWIFERY

Nursing and Midwifery at ECU provides students with access to state-of-the-art health and wellness facilities, including demonstration and clinical practice wards, health simulations that encourage scenario-based learning, and practical placements with a range of health providers. We have dedicated nursing courses as well as WA's only nursing and midwifery dual degree program.

## SCIENCE

ECU offers a range of courses in the areas of science, biological and environmental sciences, data science, bioinformatics, computing and security. ECU's research and teaching are world-class, with practical degrees that can lead to a variety of careers in fields such as marine and freshwater biology, conservation and wildlife biology, environmental management, physics, chemistry, mathematics, cyber security and horticulture.

## TEACHER EDUCATION

ECU has been at the forefront of teacher education for over 100 years and has a strong reputation for the quality of its graduates. The experienced academic team are world leaders in tertiary teaching in the area of teacher education and strive to find better ways to prepare quality teachers.



## WESTERN AUSTRALIAN ACADEMY OF PERFORMING ARTS

The Western Australian Academy of Performing Arts (WAAPA) at ECU is one of the world's leading performing arts academies. WAAPA is recognised nationally and internationally for the quality of its graduates. It provides the most extensive range of performing arts training in Australia – both on stage and behind the scenes.

# UNDERGRADUATE OPTIONS

See below for a list of popular units or visit [www.ecu.edu.au/handbook](http://www.ecu.edu.au/handbook) for more options.

Please note unit availability is subject to change.

		SEM 1	SEM 2	FEE GRP
<b>ARTS &amp; HUMANITIES</b>				
<b>Advertising and Public Relations</b>				
ADV2220	Advertising Management	ML	–	A
ADV3426	Channel Planning	ML	–	A
PRN1000	Foundations of Public Relations	ML	–	A
PRN2225	Media Relations	–	ML	A
PRN3160	Social and Online Media Strategies	–	ML	A
<b>Art and Design</b>				
PHO1125	Camera Work and Lighting	ML	ML	A
TDD1101	Design Drawing	ML	–	A
DES1106	Design Practices: Typography	–	ML	A
FAS1201	Enquiry for Garment	–	ML	A
GDI1100	Experience Design	ML	–	A
GDI2112	Game Studies	–	ML	A
FAS1105	Material Manipulation	ML	–	A
PHO3125	Photomedia Histories and Narratives	–	ML	A
VIS2130	Spatial Studio	–	ML	A
GDI2100	Web Design	ML	–	A
<b>Communications, Media and Cultural Studies</b>				
SAH2200	Audience Perception and Experience	–	ML	A
SAH1100	Communicating Ideas	ML	–	A
SAH1150	Creativity	ML	–	A
SCR3160	Documentary, Technology and Experience	ML	–	A
CMM1124	Media and Nation	ML	–	A
SPO1050	Screen Histories	ML	–	A
SPO1100	Screen Practice 1: Drama	–	ML	A
SAH1250	Storytelling and Meaning	–	ML	A
<b>Creative Writing, Journalism and Literature</b>				
JOU3209	Business and Data Journalism	–	ML	A
ENG1060	English Grammar for Professionals	–	BU	A
PHO3201	Photojournalism and Editorial Practice	ML	–	A

		SEM 1	SEM 2	FEE GRP
<b>ARTS &amp; HUMANITIES</b>				
ENG2120	Popular Texts for Young People	–	ML	A
CCC1101	Texts and Meanings	BU	–	A
<b>History and Politics</b>				
POL2105	Australian Government: The Challenges of a Modern Democracy	ML	–	A
HIS1107	Australian History: Colonisation, Nationalism and Identity	ML	–	A
SWK2112	Australian Politics and Policy	–	BU	A
POL1106	Ideas that have Shaped the Modern World	–	ML	A
HIS3180	Modern China: The Rise of a Superpower	–	ML	A
<b>Counselling, Criminology and Psychology</b>				
PSY1210	Biopsychology, Sensation and Perception	–	JO	A
SWK2114	Community Health and Well-being	–	BU	A
CRI1103	Criminology	JO	–	A
COU1101	Dynamic Models of Counselling	JO	–	A
CSV1103	Interpersonal and Helping Skills	JO	–	A
PSY1101	Introduction to Psychology	JO	JO	A
CSV1102	Introduction to Social Analysis	–	JO	A
YWK1101	Principles of Youth Work	–	JO	A
CRI2115	Psychology and Criminal Justice	JO	–	A
PSY1115	Psychology of Motivation and Emotion	JO	–	A
COU1102	Self Development 1	–	JO	A
CRI1107	The Criminal Justice Process	JO	–	A
CRI1104	The Psychology of Criminal Behaviour	–	JO	A
COU1201	Therapeutic Practice with Families and Couples	JO	–	A
CSV1203	Working with Groups	–	JO	A
YWK1220	Youth Issues	JO	–	A

## CAMPUS KEY

JO Available at the Joondalup Campus  
 ML Available at the Mount Lawley Campus  
 SW Available at ECU South West, Bunbury

\* This unit has a prerequisite and is subject to ECU approval.

		SEM 1	SEM 2	FEE GRP
<b>BUSINESS &amp; LAW</b>				
<b>Accounting and Finance</b>				
ACC1100	Accounting I	BU JO	JO	A
ACC3201	Accounting Information Systems*	JO	BU JO	A
ECF1120	Finance I	JO	JO	A
ACC2700	Financial Reporting Standards*	JO	BU JO	A
<b>Business Identity</b>				
MAN3810	Business Ethics	JO	JO	A
SBL1600	Business Identity and Protocols	BU JO	BU JO	A
SBL2100	Cultural Business Intelligence	JO	-	A
<b>Hospitality and Tourism Management</b>				
TSM3105	Contemporary Issues in Tourism and Hospitality	-	JO	A
TSM3107	Ecotourism	-	JO	A
HOS2110	Food and Beverage Management	JO	-	A
HOS3320	Hospitality Facilities Management	JO	-	A
TSM2111	Introduction to Hospitality and Tourism	JO	-	A
HOS3211	Management of Hospitality Finance	-	JO	A
TSM2105	Tourism Planning and Development	-	JO	A
TSM2650	Travel, Destination and Visitor Management	-	JO	A
<b>International Business</b>				
INB3600	Business in Asia	JO	-	A
INB2102	International Business	JO	-	A
MAN3705	International Negotiation	-	JO	A
<b>Law and Legal Studies</b>				
LAW5620	Civil Procedure I*	JO	-	A
LAW2106	Intellectual Property Law	JO	-	A
LAW1100	Legal Framework I	JO	BU JO	A
SPM3113	Sport and Leisure Law*	JO	-	A

		SEM 1	SEM 2	FEE GRP
<b>BUSINESS &amp; LAW</b>				
<b>Management and HRM</b>				
MAN2601	Employment Relations	-	JO	A
MAN2145	Human Resource Management	JO	JO	A
MAN3121	Leadership	JO	JO	A
FBL5010	Managing People and Organisations	JO ML	JO ML	A
<b>Marketing</b>				
SBL1300	Business Environments & Markets	BU JO	JO	A
BUS3100	Business Research Practices	JO	JO	A
MKT2608	Consumer Behaviour	JO	JO	A
SPM2610	Marketing and Communications for the Service Industries	-	JO	A
FBL5020	Marketing Leadership	JO ML	JO ML	A
MKT1600	Marketing Principles & Practices	JO	JO	A
MKT2605	Promotional Marketing	JO	JO	A
<b>Project Management</b>				
MAN3612	Project Management	JO	-	A
MAN2170	Starting up a Project	JO	JO	A
<b>Sport and Event Management</b>				
TSM2202	Introduction to Event Management	JO	JO	A
SPM2104	Managing Recreation Services and Facilities	JO	-	A
SPM3655	Sport and Events Funding and Finance	JO	-	A
SPM1102	Sport and Recreation Leadership and Programming	JO	-	A
SPM3114	Sport Venues and Events	-	JO	A

## CAMPUS KEY

JO Available at the Joondalup Campus  
 ML Available at the Mount Lawley Campus  
 SW Available at ECU South West, Bunbury

\* This unit has a prerequisite and is subject to ECU approval.

		SEM 1	SEM 2	FEE GRP
<b>ENGINEERING</b>				
<b>Aviation</b>				
SCA1125	Fundamentals of Flight*	JO	–	B
SCA1117	Human Factors in Aviation*	–	JO	B
<b>Chemical Engineering</b>				
ENS3111	Chemical Thermodynamics*	–	JO	B
ENS5561	Minerals and Solids Processing*	JO	–	B
ENS3113	Reaction Engineering*	–	JO	B
<b>Civil, Civil and Environmental Engineering</b>				
ENS5112	Construction Site Management*	–	JO	A
ENS5252	Construction Technology*	JO	–	B
ENS5161	Environmental and Process Risk Management*	JO	–	B
ENM3218	Fluid Mechanics*	JO	–	B
ENS3190	Mechanics of Solids*	–	JO	B
ENS3242	Soil Mechanics and Foundation Engineering*	JO	–	B
ENS2260	Surveying and Site Measurement*	JO	–	A
ENS5214	Transportation Engineering*	JO	–	B
<b>Computer Systems</b>				
ENS2344	Computer Architecture*	–	JO	B
ENS2456	Digital Electronics*	JO	–	B
ENS5251	Digital Signal Processing*	–	JO	B
ENS2257	Microprocessor Systems*	–	JO	B
ENS5204	Real-time Embedded Systems*	–	JO	B
<b>Electrical and Renewable Energy Engineering</b>				
ENS3551	Electrical Networks*	JO	–	B
ENS5360	Power Electronics*	JO	–	B
ENS5562	Renewable Energy Conversions 1*	JO	–	B
ENS3553	Signals and Systems*	–	JO	B
ENS5445	Sustainability and Renewable Energy*	–	JO	B

		SEM 1	SEM 2	FEE GRP
<b>ENGINEERING</b>				
<b>Electrical Power</b>				
ENS2457	Analog Electronics*	–	JO	B
ENS5253	Control Systems*	JO	–	B
ENS2456	Digital Electronics*	JO	–	B
ENS5360	Power Electronics*	JO	–	B
ENS3206	Power Systems 1*	–	JO	B
ENS3553	Signals and Systems*	–	JO	B
<b>Instrumentation Control and Automation/Electronics and Communications Engineering</b>				
ENS2457	Analog Electronics*	–	JO	B
ENS5253	Control Systems*	JO	–	B
ENS3554	Data Communications and Computer Networks*	JO	–	A
ENS2456	Digital Electronics*	JO	–	B
ENS5203	Electronic Circuit Design*	–	JO	B
ENS2257	Microprocessor Systems*	–	JO	B
ENS5447	Propagation and Antennas*	JO	–	B
ENS3553	Signals and Systems*	–	JO	B
ENS3556	Wireless Communication*	–	JO	B
<b>Mechanical Engineering</b>				
ENS5230	Electrical Machines and Transformers*	–	JO	B
ENS1115	Materials and Manufacturing 1*	JO	–	B
ENS3105	Mechanical Design and Development*	JO	–	B
<b>Mechatronics Engineering</b>				
ENS2456	Digital Electronics*	JO	–	B
ENM2104	Instrumentation and Measurement*	JO	–	B
ENS2257	Microprocessor Systems*	–	JO	B
ENS5442	Robotics 1*	JO	–	A
ENS3553	Signals and Systems*	–	JO	B
ENS2170	Principles of Industrial Maintenance*	JO	–	B
ENS2160	Thermodynamics*	–	JO	

## CAMPUS KEY

JO Available at the Joondalup Campus  
 ML Available at the Mount Lawley Campus  
 SW Available at ECU South West, Bunbury

\* This unit has a prerequisite and is subject to ECU approval.

		SEM 1	SEM 2	FEE GRP
<b>ENGINEERING</b>				
<b>Petroleum Engineering</b>				
ENS5162	Drilling Engineering*	–	JO	B
ENS3125	Petroleum Geology*	–	JO	B
ENS2115	Process Engineering Fundamentals*	JO	–	B
ENS2270	Reservoir Petrophysics and Formation Evaluation*	JO	–	B
ENS3301	Reservoir Thermodynamics and Fluid Properties*	JO	–	B
ENS5564	Unconventional Oil and Gas Resources*	JO	–	B
<b>Motorsports</b>				
ENS5216	Advanced Thermofluids*	–	JO	B
ENS5230	Electrical Machines and Transformers*	–	JO	B
ENS3105	Mechanical Design and Development*	JO	–	B
ENM2209	Race Car Systems*	JO	–	B

		SEM 1	SEM 2	FEE GRP
<b>KURONGKURL KATITJIN</b>				
<b>Indigenous Studies</b>				
ACS4133	Aboriginal Communities	JO	–	A
EDF3200	Aboriginal Contexts in Early Childhood Education*	–	JO ML	A
EDF3202	Aboriginal Contexts in Primary Education*	BU JO ML	–	A
EDF3203	Aboriginal Contexts in Secondary Education*	ML	ML	A
SWK2111	Aboriginal Histories of the Present	BU	–	A
IAS2340	Blak Matters: Indigenous Science Fiction and Futurisms, Ancient Knowledge for an Exciting Future	–	ML	A
SCH1101	Cultural Studies	JO	JO	A
IAS3110	Indigenous Australians, Cultural Competence– and Speech Pathology		JO	A
IAS3100	Indigenous Health*	JO	JO	A
IAS3303	Political Economy of – Indigenous Australia	JO	A	



## CAMPUS KEY

JO Available at the Joondalup Campus  
 ML Available at the Mount Lawley Campus  
 SW Available at ECU South West, Bunbury

\* This unit has a prerequisite and is subject to ECU approval.

		SEM 1	SEM 2	FEE GRP
<b>MEDICAL &amp; HEALTH SCIENCES</b>				
<b>Exercise and Sports Science</b>				
SPS1840	Biomechanics and Skill Acquisition	–	JO	A
SPS1750	Coaching Science 1 – Volleyball and Netball	–	JO	A
SPS1755	Coaching Science 2 – Badminton and Soccer	JO	–	A
SPS2750	Coaching Science 3 – Aquatics and Athletics	JO	–	A
SPS3750	Coaching Science 4 – Dance and Australian Rules Football	–	JO	A
SPS1111	Foundations of Fitness and Training	–	BU JO	A
SPS1109	Fundamentals of Football Coaching	JO	–	A
SPS3604	Human Movement – Participation and Inclusion	–	JO	A
NUT2211	Metabolic Biochemistry*	–	JO	B
SPS2516	Motor Learning and Control	–	JO	A
SPS3104	Performance Studies 7	JO	–	A
SPS3530	Principles and Practices of Coaching	–	JO	A
SPS2622	Psychology of Sport, Exercise and Health	JO	–	A
SPS2615	Sports Injury Prevention and Management	JO	–	A
<b>Health Promotion, Nutrition and Public Health</b>				
ADS1151	Addiction Studies: Fundamental Concepts	JO	JO	A
HST3100	Child and Adolescent Health	BU JO	–	A
HST2120	Community Development in Health Promotion	–	JO	A
NUT1111	Food and Nutrients	–	BU JO	A
HST2124	Health Communication	JO	–	A
HST1125	Health Priorities and Human Behaviour	BU JO	–	A
HST2220	Health Promotion Planning and Administration	–	JO	A
HST1183	Health, Society and Sustainability	–	BU JO	A
HST3101	Healthy Ageing	–	JO	A
NUT1121	Human Nutrition	BU JO	JO	A

		SEM 1	SEM 2	FEE GRP
<b>MEDICAL &amp; HEALTH SCIENCES</b>				
HST1120	Introduction to Health Promotion	JO	–	A
NUT1112	Nutrition and Public Health	JO	BU	A
HST1111	Population Health	BU JO	BU JO	A
SPS3120	Psycho-social Aspects in Physical Activity and Chronic Disease	JO	–	A
<b>Medical and Biomedical</b>				
HST1109	Epidemiology	JO	BU JO	A
MMS3115	Histopathology and Applied Histotechniques*	–	JO	B
SCH1132	Human Evolution and Ecology	–	JO	A
MMS2200	Introduction to Histology and Histotechniques	JO	–	B
SPS1530	Lifespan Growth and Development	JO SW	–	A
<b>Occupational Health and Safety</b>				
HST1152	Introduction to Occupational Health and Safety	JO SW	–	A
OHS3404	Managing Occupational Risk	–	JO	A
HST2256	Occupational Hygiene	–	JO SW	A
<b>Paramedical Science</b>				
PSP3101	Advanced Paramedical Practice 1*	JO	–	B
PSP3103	Advanced Paramedical Practice 2*	–	JO	B
PSP1108	Clinical Skills for Paramedical Practice 1*	–	JO	B
PSP2103	Clinical Skills for Paramedical Practice 2*	–	JO	B
PST2108	Disease States in Emergency Care*	JO	–	B
PST2109	Medical Studies for Paramedics*	–	JO	B
PST1107	Perspectives in Paramedic Professional Practice	JO	–	B
PST3210	Pre Hospital Perspectives in Emergency Management*	–	JO	B
PST1108	Theoretical Perspectives In Paramedical Practice 1*	JO	–	B
PST2102	Trauma Studies for Paramedics*	JO	–	B

## CAMPUS KEY

JO Available at the Joondalup Campus  
 ML Available at the Mount Lawley Campus  
 SW Available at ECU South West, Bunbury

\* This unit has a prerequisite and is subject to ECU approval.



		SEM 1	SEM 2	FEE GRP
<b>NURSING &amp; MIDWIFERY</b>				
<b>Nursing</b>				
NUM1102	Communication Skills for Nurses and Midwives*	BU JO	JO	B
NUM1204	Evidence Based Practice in Nursing and Midwifery*	JO	BU JO	B
NUM1203	Health Assessment*	JO	BU JO	B
NUR2402	Healthy Ageing and Chronic Conditions*	JO	BU JO	B
NUM2307	Mental Health and Wellbeing in Clinical Practice 1*	BU JO	JO	B
NUR3503	Nursing Children and Young People*	BU JO	JO	B

<b>SCIENCE</b>				
<b>Biology and Environmental Science</b>				
SCI2123	Astronomy	-	JO	B
SCI2118	Australian Biota	-	BU JO	B
SCI1182	Case Studies in Science	-	JO	B
SCI1185	Ecology	-	BU JO	B
SCI1187	Form and Function in Biology	BU JO	-	B
SCM2104	Geographical Information Systems	-	BU JO	B
GEO1150	Geography and Environment: People, Pattern, Process	JO	-	A
SCI1193	Introduction to Environmental Science	JO	-	B
SCI1001	Introduction to Sustainability	JO	-	A
SCI1183	Origins and Evolution of Life	-	BU JO	B
SCI1192	Physical Environments	-	BU JO	B
SCI1125	Professional Science Essentials	BU JO	JO	B
SCI3150	Science Project	JO	JO	B

		SEM 1	SEM 2	FEE GRP
<b>SCIENCE</b>				
<b>Chemistry</b>				
SCC1123	Chemistry for the Life Sciences	BU JO	-	B
SCC1111	General Chemistry*	JO	-	B
<b>Mathematics and Physics</b>				
MAT1108	Foundations of Mathematics	-	JO	A
SCP1134	Foundations of Physics	-	JO	B
SCP1132	Introduction to Physics	JO	-	B
MAT1137	Introductory Applied Mathematics*	JO	BU JO	A
MAT1114	Introductory Statistics	BU	JO	A
MAT1252	Mathematics for Computing	JO	JO	A
MAT1250	Mathematics 1*	JO	JO	A
MAT1251	Mathematics 2*	-	JO	A
MAT2107	Statistical Research Methods	-	JO	A
<b>Security and Computing</b>				
CSG1105	Applied Communications	JO	JO	A
SCY2120	Applied Intelligence	-	JO	A
SCY1108	Building Management Systems	-	JO	A
CSI1101	Computer Security	JO	JO	A
SCY3506	Counter Intelligence	-	JO	A
SCY2112	Counterterrorism	-	JO	A
CSI2102	Information Security	-	JO	A
SCY3107	Intelligence Analysis	JO	-	A
SCY1117	Intelligence Foundations	JO	-	A
CSP2108	Introduction to Mobile Applications Development	-	JO	A
CSP1150	Programming Principles	-	JO	A
SCY3508	Radicalism and Political Extremism	JO	-	A
SCY2108	Security Control Systems	JO	-	A
SCY1118	Security Foundations	JO	-	A
SCY2109	Surveillance Systems	JO	-	A
SCY2107	Threat Detection Systems	-	JO	A

## CAMPUS KEY

JO Available at the Joondalup Campus  
 ML Available at the Mount Lawley Campus  
 SW Available at ECU South West, Bunbury

\* This unit has a prerequisite and is subject to ECU approval.

		SEM 1	SEM 2	FEE GRP
<b>TEACHER EDUCATION</b>				
<b>Early Childhood Education</b>				
ECS2260	Assessing and Evaluating Young Children's Learning*	–	BU JO ML	A
LAN1009	Communication Skills for Teaching and Learning*	BU JO ML	–	A
AED1240	Drama Arts in Early Childhood Education*	BU JO ML	–	A
SCE2240	Early Childhood Science and Technology Education*	BU JO ML	–	A
ECS2240	Guiding Children's Behaviour in Positive Learning Environments*	BU JO ML	–	A
HPE2260	Health and Physical Education for Young Children*	–	BU JO ML	A
ECS1245	Play and Pedagogy*	–	BU JO ML	A
SSE3260	Social Science Education in Early Childhood*	JO ML	–	A
ECS1265	Young Children's Learning and Development*	BU JO ML	A	



		SEM 1	SEM 2	FEE GRP
<b>TEACHER EDUCATION</b>				
<b>Primary Education</b>				
LIT4260	Children's Literature in the Classroom*	–	JO ML	A
LAN2240	English in the Early Years of Primary School*	BU JO ML	–	A
MAE1250	Foundations of Primary Mathematics*	BU JO ML	–	A
HSS2240	Humanities and Social Science in Primary Schools 1*	BU JO ML	–	A
EDS3240	Including Children with Special Educational Needs*	BU JO ML	–	A
EDU4271	Managing the Behaviour of Students with Special Educational Needs *	BU JO	ML	A
EDU2260	Positive Learning Environments*	–	BU JO ML	A
LAN4131	Teaching Reading in the Primary Classroom*	JO	ML	A
SCE4270	Teaching Integrated Science in Junior Primary Years*	ML	–	A
<b>Secondary Education</b>				
EDU2231	Creating Positive Learning Environments*	–	JO ML	A
DTE2110	Design and Technology Education 1*	ML	–	A
MUE4105	Directing School Music Ensembles*	–	ML	A
EDU3104	Diversity in the Secondary Classroom*	–	JO ML	A
HPE2112	Physical Activity, Body, Culture and Identity*	–	JO	A
CSE3152	Teaching Introductory Computer Programming*	–	ML	A
DSE2210	Teaching Senior School Drama*	–	ML	A
HPE3101	Teaching Secondary Health Education*	JO	–	A
HSS2130	Teaching and Learning in Humanities and Social Sciences*	ML	–	A
MSE2101	Teaching Lower Secondary Mathematics*	JO	–	A

## CAMPUS KEY

JO Available at the Joondalup Campus  
 ML Available at the Mount Lawley Campus  
 SW Available at ECU South West, Bunbury

\* This unit has a prerequisite and is subject to ECU approval.

		SEM 1	SEM 2	FEE GRP
<b>WAAPA</b>				
<b>Dance</b>				
DAN3901	Ballet 3*	ML	ML	A
DAN3903	Contemporary 3*	ML	ML	A
DAN3902	Performance 3*	ML	ML	A
DAN3904	Related Physical Disciplines 3*	ML	ML	A
DAN3906	Special Topics*	ML	ML	A
<b>Drama, Theatre and Arts</b>				
ADM2410	Arts in Contemporary Society*	ML	-	A
PAM2016	Arts Management*	ML	ML	A
BPA2110	Australian Theatre*	-	ML	A
ADM1325	Communication in the Arts*	ML	-	A
BPA3545	Creativity and Collaboration in the Performing Arts*	ML	ML	A
PAM2121	Playwriting Workshop 1*	ML	-	A
BPA2006	Site Specific, Participatory and Immersive Performance*	ML	-	A
PAM3104	Stage Combat*	ML	ML	A
DAN2170	The Arts in Historical and Cultural Contexts*	-	ML	A
PAD3103	Theory and Practice of Contemporary Performance*	ML	ML	A
PAM2103	Theory of Directing*	ML	ML	A
BPA3205	Workplace Integrated Learning: Project Exegesis*	ML	ML	A
BPA3115	Workplace Integrated Learning: Written Project Proposal*	ML	ML	A



		SEM 1	SEM 2	FEE GRP
<b>WAAPA</b>				
<b>Music</b>				
MUS2526	Classic Ensemble 3*	ML	-	A
MUS1563	Classic Musicianship 1*	ML	-	A
MUS1341	Ensemble Studies 1*	ML	-	A
MUS1342	Ensemble Studies 2*	-	ML	A
MUS1381	Jazz and Contemporary Musicianship 1*	ML	-	A
MUS1390	Music History: Chasin' the Trane - Modern Jazz Takes Hold*	-	ML	A
MUS2614	Music History: Electronic Music Overview*	-	ML	A
MUS4608	Music History: Film & Media*	ML	-	A
MUS1490	Music History: Stax, Motown and All Things Soul*	-	ML	A
MUS1140	Music of Our Time: The Australian Musical Landscape*	ML	-	A
MUS2619	Sound Recording*	ML	-	A



## CAMPUS KEY

JO Available at the Joondalup Campus  
 ML Available at the Mount Lawley Campus  
 SW Available at ECU South West, Bunbury

\* This unit has a prerequisite and is subject to ECU approval.

# POSTGRADUATE OPTIONS

See below for a list of popular units or visit [www.ecu.edu.au/handbook](http://www.ecu.edu.au/handbook) for more options.

Please note unit availability is subject to change.

		SEM 1	SEM 2	FEE GRP
<b>ARTS &amp; HUMANITIES</b>				
CMM5170	Advertising and Brand Awareness	ML	ML	A
DES5102	Design Thinking	–	ML	A
CMM5110	Globalisation, Cultural Diversity and Innovation	ML	–	A
CMM5165	Media and Society in a Globalised World	ML	ML	A
CMM6150	Media and Transnational Asia	ML	ML	A
CMM5180	Public Relations Strategies	ML	ML	A
CSV5105	Research in Community Services	JO	JO	A
VIS5110	Visual Communication	ML	–	A
DES5310	What is Design For?	ML	–	A
<b>BUSINESS &amp; LAW</b>				
ACC6010	Accounting Concepts and Applications	JO	JO	A
MKT5325	Applied Digital Marketing	JO	JO	A
FBL6530	Business Events Management	–	JO	A
MAN6706	Developing Individuals, Leaders and Organisations	JO	JO	A
ECF6115	Financial Markets and Institutions	JO	JO	A
HOS6504	Global Hospitality Operations Management	JO	JO	A
MAN5401	Managing Project Scope and Stakeholders	JO	JO	A
MKT6304	New Product Development	JO	JO	A
LAW6501	Principles of Contract and Corporate Law in Business	JO	JO	A
LAW6501	Project Risk Management LAW6501	JO	–	A

		SEM 1	SEM 2	FEE GRP
<b>ENGINEERING</b>				
ENS5543	Engineering Management*	–	JO	A
ENS6144	Engineering Geology and Rock Mechanics	–	JO	B
ENS5240	Industrial Control*	–	JO	B
ENS6146	Instrumentation and Measurement*	JO	–	B
ENS6138	Principles of Industrial Maintenance*	JO	–	B
<b>KURONGKURL KATITJIN</b>				
EDF6201	Aboriginal Contexts in Early Childhood Education*	–	ML	A
EDF6202	Aboriginal Contexts in Primary Education*	BU ML	–	A
EDF6203	Aboriginal Contexts in Secondary Education*	ML	–	A
<b>MEDICAL &amp; HEALTH SCIENCES</b>				
PST5110	Advanced Cardiac Studies	JO	–	B
PST5111	Advanced Medical Studies	JO	–	B
PST5107	Advanced Obstetrics for Paramedics	JO	JO	B
HST6337	Communicable Disease	JO	–	A
HST6333	Diversity, Culture and Health	–	JO	A
PST5200	Extended Care Paramedicine 1	JO	–	B
PST5214	Extended Care Paramedicine 2	JO	–	B
PST6206	Extended Care Paramedicine 3	JO	JO	B
ART6001	Female Reproduction, Fertility and Pathophysiology	JO	–	A
OHS6205	Health, Safety and Workplace Environment	JO	–	A
ART6002	Male Reproduction, Fertility and Pathophysiology	JO	–	A
OHS6132	Occupational Health and Safety Management Systems	–	ML	A

## CAMPUS KEY

JO Available at the Joondalup Campus  
 ML Available at the Mount Lawley Campus  
 SW Available at ECU South West, Bunbury

\* This unit has a prerequisite and is subject to ECU approval.

		SEM 1	SEM 2	FEE GRP
<b>MEDICAL &amp; HEALTH SCIENCES</b>				
PST6113	Paediatrics for Critical Care Paramedics	–	JO	B
SPS5303	Physiological Testing of Human Performance	JO	JO	A
HST5161	Public Health: Philosophy, Principles and Practice	JO	JO	A
HST6335	Public Health Strategies	JO	A	
PST6105	Retrieval Medicine	JO	JO	B

<b>NURSING &amp; MIDWIFERY</b>				
PSR5101	Managing Risk in the Clinical Environment*	JO	JO	B
NUR6118	Nursing in the Context of Global Health*	JO	JO	B
NUR6121	Palliative Care Nursing*	JO	JO	B
NUR6120	Promoting the Health and Well-Being of Children and Young People*	–	JO	B
NST6101	Teaching and Learning in the Clinical Setting*	JO	JO	B
NUR6117	The Deteriorating Patient*	JO	JO	B

<b>SCIENCE</b>				
SCP5320	Advances in Physics 1	JO	JO	B
SCP5323	Advances in Physics 2	JO	JO	B
MAT5212	Biostatistics	JO	JO	A
SCI6150	Biological Databases and Data Mining	–	JO	B
SCI6100	Environmental Monitoring and Investigation	JO	JO	B
SCI6105	Geographical Information Systems and Remote Sensing	JO	–	B
SCI6152	Mass Spectrometry in Systems Biology	–	JO	B
MAT6105	Mathematical Fundamentals	JO	A	
CSI6202	Network Security	–	JO	A
CSI6201	Networking Technologies	JO	JO	A
CSI6208	Programming Principles	JO	JO	A
CSI6203	Scripting Languages	JO	JO	A

		SEM 1	SEM 2	FEE GRP
<b>TEACHER EDUCATION</b>				
EDU6170	Assessment in Education: Policies, Pedagogy and Equity*	–	ML	A
ECE6130	Constructing Early Childhood Curriculum*	ML	ML	A
ECE6150	Contemporary and Comparative Perspectives in Early Childhood Education*	–	ML	A
AED6150	Dance, Drama and Media Arts Education in Early Childhood*	–	ML	A
EDU6373	Foundation Studies and Current Issues in Special Education	ML	–	A
ECE6140	Investigating Young Children's Holistic Learning and Development*	ML	–	A
EDU6120	Literacy and Numeracy in Teaching and Learning*	ML	–	A
EDU6160	Leading Education in a Global Context*	ML	–	A
MSC6110	Mathematics and Technologies for Young Children*	ML	–	A
SCE6120	Science for Young Children*	–	ML	A



## CAMPUS KEY

JO Available at the Joondalup Campus  
 ML Available at the Mount Lawley Campus  
 SW Available at ECU South West, Bunbury

\* This unit has a prerequisite and is subject to ECU approval.

# HOW TO APPLY: YOUR STUDY ABROAD JOURNEY

The information below outlines your study abroad journey, including the entry requirements and a look at your future pathway.

## ENGLISH UNDERGRADUATE AND POSTGRADUATE ENTRY

Academic IELTS overall minimum band score of 6.0, with no individual band less than 6.0. Visit the English Competency page for equivalent tests [www.ecu.edu.au/future-students/course-entry/english-competency](http://www.ecu.edu.au/future-students/course-entry/english-competency).

You may satisfy English if you have completed 0.375 equivalent full-time load (EFTSL) of your university degree in English and are from Austria, Belgium, Canada, Denmark, Finland, France, Germany, Iceland, Netherlands, Norway, Sweden or Switzerland.

The Study Abroad program can also be packaged with English through one of our pathway providers. Visit [www.ecu.edu.au/centres/international-office/our-services/agent-support/pathway-partners](http://www.ecu.edu.au/centres/international-office/our-services/agent-support/pathway-partners) for more information.

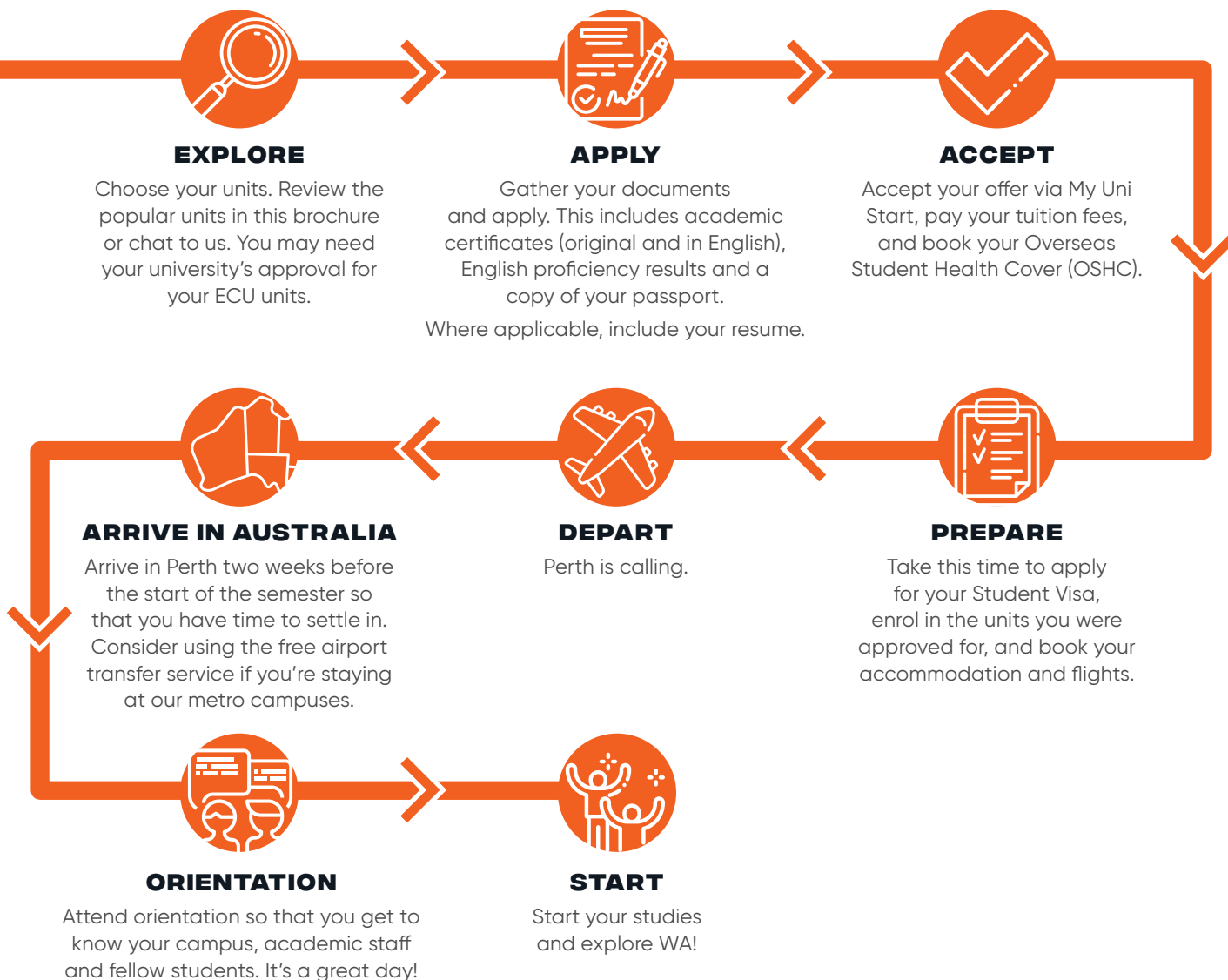
## ACADEMIC UNDERGRADUATE ENTRY (BAND 3)

Admission may be satisfied through the completion of secondary schooling, an Australian Qualifications Framework (AQF) qualification or successful completion of 0.25 EFTSL of study at bachelor level or higher at an Australian higher education provider (or equivalent).

## ACADEMIC POSTGRADUATE ENTRY (BAND 6)

Admission may be satisfied through the completion of a bachelor (undergraduate) degree or higher.

Further information on academic admission can be found on the Course Entry page [www.ecu.edu.au/future-students/course-entry](http://www.ecu.edu.au/future-students/course-entry).



# FACILITIES, SERVICES & SUPPORT

## RESOURCES

- Fully-equipped modern libraries
- e-labs available 24/7
- Free Wi-Fi
- Hairdresser (JO)
- ATMs



## STUDENT HUB

- Course information & advice
- Enrolment assistance
- Advice on how to resume a course following deferral/discontinuation
- Advice on extension of time
- Graduation eligibility

## FOOD

- Cafés and other food outlets



## HEALTH

- Medical Centres (JO/ML)
- Free Counselling service
- Fully-equipped sports, recreation & fitness centres (JO/ML)
- Mini-gym & playing courts (SW)

## SAFETY

- 24/7 security service
- Well-lit pathways
- Emergency phones
- 3271 parking bays across campuses
- Night security escort
- Security app



## FAMILY

- Childcare
- Parenting rooms
- Crèche
- Kids Holiday Program (JO/ML)



## SOCIAL

- Student Guild
- Clubs and societies
- University games
- Taverns (JO/ML)



## LEARNING

- Academic Mentoring
- Learning Advisers
- Career, Volunteering, Mentoring & Leadership Services
- Equity, Diversity & Disability Services
- Study Abroad & Exchange Program
- Kurungkurl Katitjin (Centre for Indigenous Australian Education & Research)
- LGBTIQ+ supportive environment



JO – Joondalup ML – Mount Lawley SW – ECU South West, Bunbury

## EQUITY, DIVERSITY & DISABILITY

ECU's Equity, Diversity and Disability Service (EDDS) supports students whose studies may be affected by a range of circumstances including a medical condition or disability, either their own or that of a family member that they care for, cultural or religious practices and other situations on a case by case basis. EDDS staff will work with you to identify reasonable adjustments and provide ongoing support through an individual Learning and Assessment Plan (LAP). You can make an appointment to have an obligation-free, confidential chat with an EDDS Officer by contacting the service at [studentequity@ecu.edu.au](mailto:studentequity@ecu.edu.au)

# STUDENT ACCOMMODATION

ECU offers international students a variety of accommodation options, including on-campus villages, off-campus private rental properties, and home-stay with a Western Australian family.

## ON-CAMPUS STUDENT VILLAGE

ECU Villages offer easy, convenient and affordable accommodation across all three campuses. Get an all inclusive concierge experience with the following facilities and inclusions:

- Rent
- Furniture
- 24/7 Support
- Utilities (water, gas, electricity)
- High speed Wi-Fi (unlimited)
- Laundry accessible 24/7
- Outdoor BBQ area
- On-site parking available (additional cost)
- Sound space (Mount Lawley)
- TV Room with Foxtel and gaming consoles (Mount Lawley & Joondalup)
- Swimming Pool (Mount Lawley & Joondalup)
- Basketball court (Mount Lawley & Joondalup)
- Pool table, foosball and table tennis (Mount Lawley & Joondalup)
- Recreation and lounge area

Due to the high demand for on-campus accommodation, we recommend that you visit [campuslivingvillages.com/australia/perth/edith-cowan-university-village](http://campuslivingvillages.com/australia/perth/edith-cowan-university-village) and make your online application early.

Students staying at an ECU Village can also experience special events including:

- Movie nights
- Community Dinners
- Gaming Nights
- Craft Workshops
- Karaoke Nights (Mount Lawley & Joondalup)
- Sport Competitions



ECU Village – Mount Lawley Campus



ECU Village – Joondalup Campus





### OFF-CAMPUS ACCOMMODATION

Students may choose to rent an apartment, townhouse or house on their own or with fellow students. Private rental accommodation can be furnished or unfurnished.

Get in touch with **ECU Village** for information on off-campus accommodation.

### HOMESTAY

Students can also choose to live in a private home with an Australian family. The chance to be involved in daily life, the learning of our culture and customs, plus the added advantage of having the company of other people, are just some of the reasons Homestay is popular.

Visit [homestaynetwork.org/edith-cowan-university](http://homestaynetwork.org/edith-cowan-university) for more information.

## LIVING COSTS

Day-to-day living costs will vary, based on personal situations, interests and financial position. Students should plan a budget to suit their needs, but make sure it's flexible enough to allow for changes in circumstances. Here is a guide to some key weekly expenses:

	Accommodation on-campus*	Share house off-campus	Homestay off-campus
Rent	From \$120	\$165-\$300	\$235-\$325
Food	\$80-\$150	\$80-\$150	Included
Transport to University	Walking distance	\$20-\$45	\$20-\$45
Electricity & gas	Included	\$35	Included
Internet	Included	\$10-\$20	\$10-\$20
Mobile phones	\$15	\$15	\$15

Estimated costs at time of print

\*Limited number of accommodation bursaries are available, visit [ecu.edu.au/scholarships/offers](http://ecu.edu.au/scholarships/offers) for more information.

# FREQUENTLY ASKED QUESTIONS

## WHY DO I HAVE TO CHOOSE UNITS BEFORE I APPLY?

We assess you for your units at the same time we assess you for your course entry. This saves you a lot of time, particularly when units have prerequisites

## CAN I CHOOSE UNITS FROM ACROSS DIFFERENT ECU SCHOOLS?

You can. Lots of our students are keen to get a taste of different ECU Schools. This could include three or four Schools if you like.

## WHAT DO YOU MEAN BY "UNIT"?

A unit refers to the different subject/courses/classes you enrol in. You would enrol in 3-4 units in one semester or 6-8 units in two semesters.

## WHAT IS A UNIT PREREQUISITE?

A prerequisite is an entry requirement. You may have met standard English and academic entry for the Study Abroad program, but you will also have to meet entry requirements for certain units.

## DO I NEED TO CHAT WITH MY UNIVERSITY BACK HOME ABOUT THE UNITS I CHOOSE?

Absolutely. They will be able to tell you if the ECU units you wish to study will count as credit towards your degree. Unfortunately, we cannot confirm this.

## IS THERE AN APPLICATION DEADLINE FOR STUDY ABROAD?

Please keep an eye on the Important Dates page, which lists the recommended application dates [www.ecu.edu.au/future-students/applying/important-dates](http://www.ecu.edu.au/future-students/applying/important-dates)



## COULD THE UNITS I STUDY DURING STUDY ABROAD COUNT AS CREDIT TOWARDS AN ECU DEGREE?

It is possible. It will all come down to how well the units you have studied in Study Abroad align with your chosen ECU degree. Check out Credit and Recognition of Prior Learning (CRPL) [www.ecu.edu.au/my-uni-start/get-started/applying-for-credit-and-recognition-of-prior-learning](http://www.ecu.edu.au/my-uni-start/get-started/applying-for-credit-and-recognition-of-prior-learning)

## DO I NEED HEALTH COVER?

Yes, you need Overseas Student Health Cover (OSHC). It is compulsory if you plan to study on a Student Visa.

Medibank is ECU's preferred provider, but you can opt for any Government Registered Provider. Your offer letter will tell you more.

## IS THERE ANYWHERE I CAN FIND INFORMATION ON WHAT CERTAIN ECU SYSTEMS OR ACRONYMS MEAN?

We know it can be difficult getting used to study at a new university, including the names of the different systems and the study language. Please take a moment to look at our Uni-speak Glossary [www.ecu.edu.au/my-uni-start/glossary-uni-speak](http://www.ecu.edu.au/my-uni-start/glossary-uni-speak)

## WHAT IS MY UNI START?

My Uni Start is your one-stop place to accept your offer, activate your account, enrol in your units, book orientation and everything in between. Check out My Uni Start today [www.ecu.edu.au/my-uni-start/overview](http://www.ecu.edu.au/my-uni-start/overview)

## WHAT KIND OF SUPPORT IS AVAILABLE ONCE I BECOME AN ECU STUDENT?

The Student Hub is your place.

We have Hubs available on all three campuses, with each one dedicated to supporting our current students with matters relating to their studies.

## GOT ANOTHER QUESTION?

If you have any further questions, jump online to chat with one of our students [www.ecu.edu.au/degrees/international/ask-a-student](http://www.ecu.edu.au/degrees/international/ask-a-student)



**DON'T JUST  
CHANGE  
YOUR FUTURE,  
CHOOSE IT.**

**BECOME  
WORLD READY  
AT ECU.**

#### Contact

P 134 328

P (61 8) 6304 0000 (Outside Australia)

E [international.partnerships@ecu.edu.au](mailto:international.partnerships@ecu.edu.au)


W [ecuworlready.com.au/international](http://ecuworlready.com.au/international)

#### Find us at

 [ECUJourney](#)

 [edithcowanuni](#)

 [edithcowanuniversity](#)

 [school/edith-cowan-university](#)

 [edithcowanuniversity](#)

**WORLD READY** —

Every effort has been made to ensure that the information in this publication is correct at the time of production. The information is subject to change from time to time and the University requests the right to add, vary or discontinue courses and impose limitations on enrolment in any course. The publication constitutes an expression of interest and is not to be taken as a firm offer or understanding. This publication is intended for Australian citizens and permanent residents only. Some information contained in this publication may not be applicable to international students.

GREENING ECU: Edith Cowan University is committed to reducing the environmental impact associated with its operations by conducting its activities in a socially and environmentally responsible manner. This includes implementing strategies and technologies that minimise waste of resources and demonstrate environmentally sensitive development, innovation and continuous improvement.

CRICOS Provider No. 00279B | RTO Code 4756  
TEQSA ID PRV12160, Australian University

[key2creative\\_42685\\_09/22](#)